

# VUT

---

## FACTBOOK

Vol: 2, September 2008



**Vaal University of Technology**

# VUT – FACTBOOK

## Table of contents:

Introduction.....	1
1. Institutional summary.....	1
2. Student profile	
2.1 Distribution of student headcounts across the faculties: .....	2
2.2 VUT student profile per faculty.....	2
2.3 Distribution of student headcounts at different sites of delivery.....	3
2.4 Gender distribution of students across faculties (2006 – 2007).....	4
2.5 Racial composition.....	5
2.6 Residential profile.....	6
2.7 National Student Financial Aid Scheme (NSFAS).....	7
2.8 Language.....	8
3. Academic performance indicators	
3.1. Success rate.....	9
3.1.1 Success rate per faculty for June and November 2007 exams.....	9
3.1.2 Success rate for June exams 2007 and 2008.....	9
3.1.3 Success rate per for June and November 2007 exams.....	10
3.1.4 Success rate at various sites of delivery.....	11
3.2 Graduates	
3.2.1 Graduate totals (2006-2007) and the distribution across the faculties.....	12
3.2.2 Gender distribution of graduates.....	12
3.2.3 Gender distribution of graduates per faculty.....	13
4. Staff Profile	
4.1 Head count totals of permanently appointed staff by category.....	13
4.2 Full-time equivalent staff by category.....	14
4.3 Equity.....	14
4.4 Permanent gender profile of the institution.....	15
4.5 Highest formal qualification of permanently appointed instruction/research staff.....	15
5. Funding	
5.1 Enrolled and weighted FTE's per faculty.....	16
5.2 Summary of enrolled and weighted FTE's per campus.....	17
6. Approved PQM.....	18-22

## INTRODUCTION

The Institutional Planning Unit is pleased to provide you with the latest Vaal University of Technology Fact Book. The information herein is the audited data of 2007 and the current available data of 2008.

We hope that the Fact Book provides a wide variety of readers with useful and easy to understand information.

Amid the growth in number of electronic management information system and sophistication of management information in South Africa, there still appears to be a need for a quick reference to facts, figures and indicators for users from within and outside the Vaal University of Technology.

The summary below is based on the audited data of the 2007 academic year, unless specified otherwise.

### 1. INSTITUTIONAL SUMMARY FOR 2007

INDICATOR	VALUE
Headcount <sup>1</sup>	16 487
Number of full time staff	1233
Institutional size compared to national student population in SA	2.5%
Graduation rate	16.6%
Number of accredited Diploma programmes	48
Number of accredited B-Tech programmes	35
Number of approved M-Tech and D-Tech	23
Number of graduates	2679

*1. Includes HEMIS: 16146*

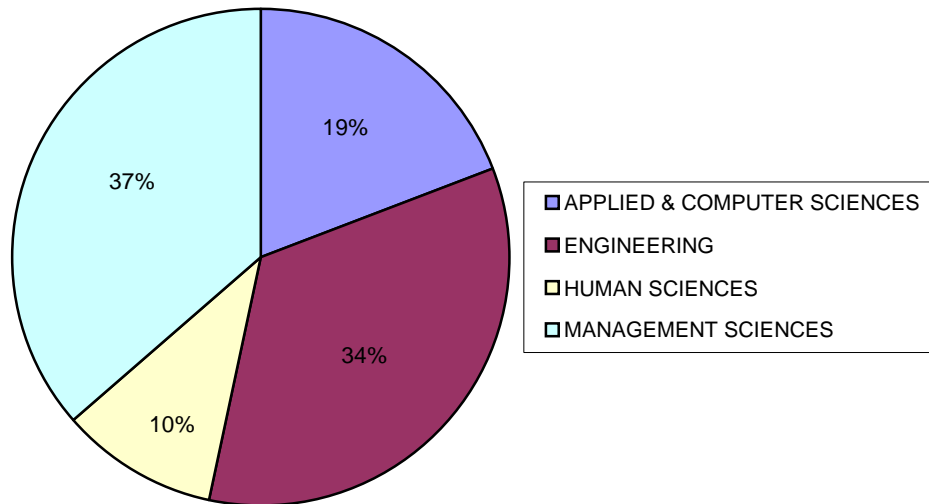
## 2. STUDENT PROFILE

### 2.1 DISTRIBUTION OF STUDENT HEADCOUNT ACROSS FACULTIES:

HEADCOUNT	YEAR		
	2006	2007	2008*
FACULTY			
APPLIED & COMPUTER SCIENCES	2336	3175	3318
ENGINEERING	5915	5605	5863
FACULTY OF HUMAN SCIENCES	1821	1672	1850
MANAGEMENT SCIENCES	7542	6035	6030
<b>Grand Total</b>	<b>17614</b>	<b>16487</b>	<b>17061</b>

### 2.2 VUT STUDENT PROFILE PER FACULTY

Below is the percentage distribution of our 2007 student headcount amongst the four faculties.

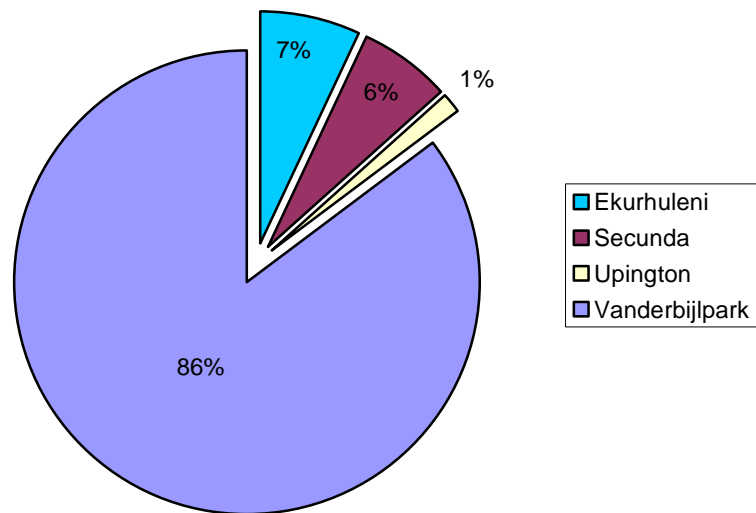


1.\* - Data could change.

2. **Headcount is calculated based on the following criteria:** The primary qualification of the student; the qualification has not been cancelled; the student is registered for a subject.

## 2.3 DISTRIBUTION OF STUDENT HEADCOUNTS AT DIFFERENT SITES OF DELIVERY:

Campus	2007	2008*
Ekurhuleni	1150	1193
Secunda	1032	1073
North West	312	35 **
Uppington	224	218
Vanderbijlpark	13769	14542
<b>Grand Total</b>	<b>16487</b>	<b>17061</b>



1.\* - Data could change.

2. **Headcount is calculated based on the following criteria:** The primary qualification of the student; the qualification has not been cancelled; the student is registered for a subject.

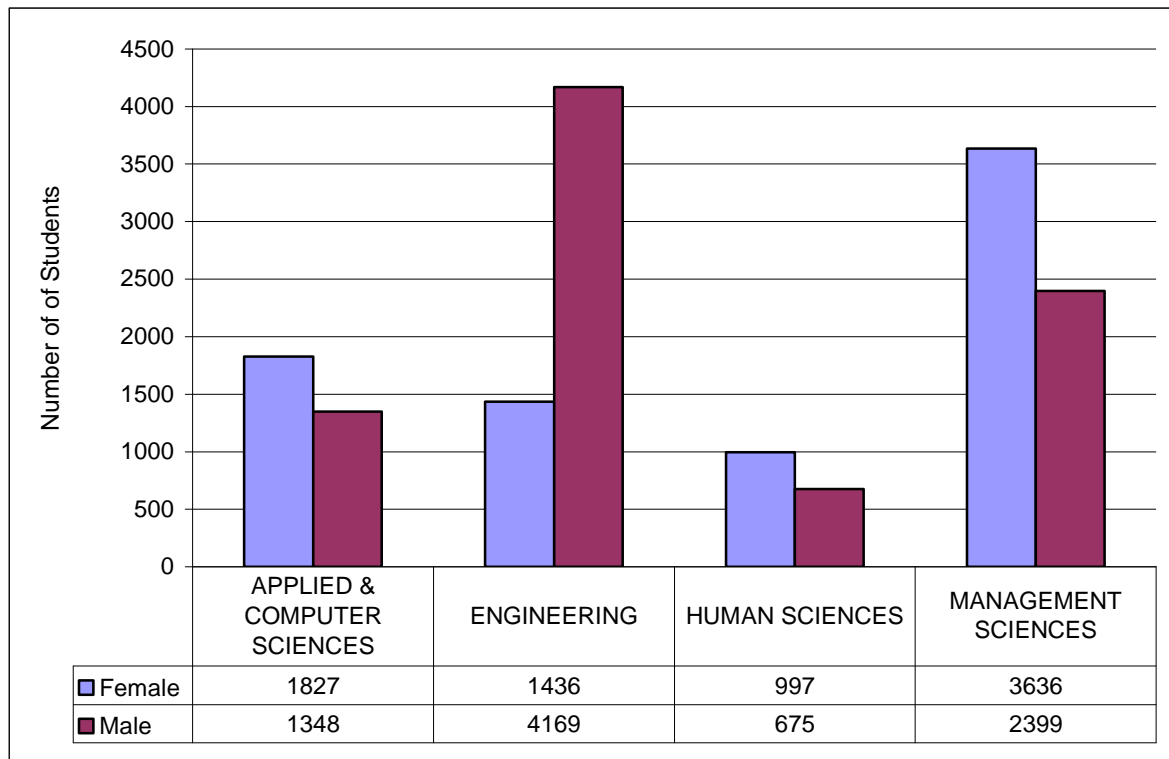
3. \*\* - North West campus is in the process of being phased out.

4. Edu-City statistics is incorporated in Vanderbijlpark.

## 2.4 GENDER DISTRIBUTION OF HEADCOUNT STUDENT ACROSS FACULTIES (2006 – 2008\*)

Faculty	2006		2007		2008*	
	Female	Male	Female	Male	Female	Male
APPLIED & COMPUTER SCIENCES	1210	1126	1827	1348	1821	1497
ENGINEERING	1504	4411	1436	4169	1474	4389
FACULTY OF HUMAN SCIENCES	1058	763	997	675	1108	742
MANAGEMENT SCIENCES	4715	2827	3636	2399	3594	2436
<b>Grand Total</b>	<b>8487</b>	<b>9127</b>	<b>7896</b>	<b>8591</b>	<b>7997</b>	<b>9064</b>

### GENDER DISTRIBUTION OF STUDENTS ACROSS FACULTIES 2007



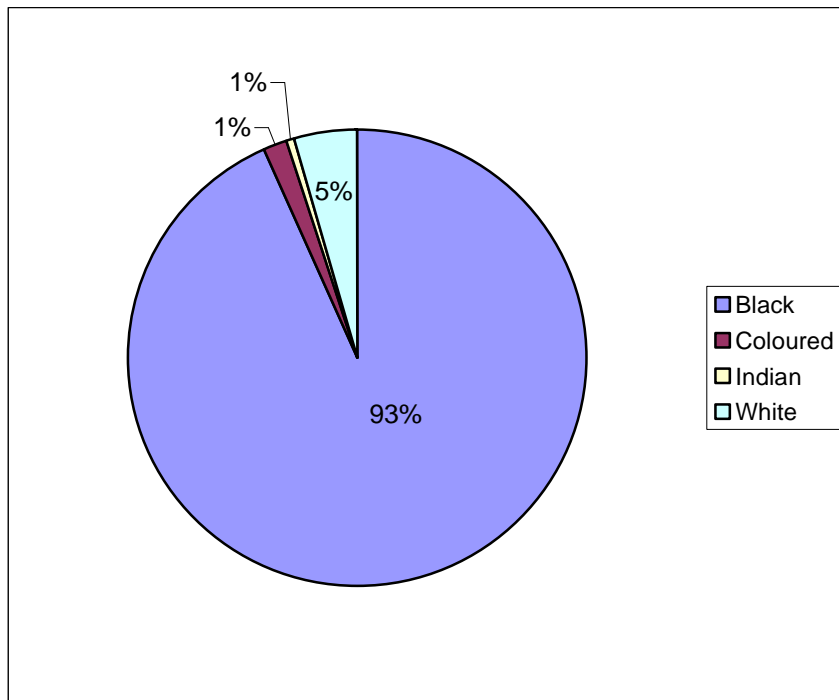
1.\* - Data could change.

2. **Headcount is calculated based on the following criteria:** The primary qualification of the student; the qualification has not been cancelled; the student is registered for a subject.

## 2.5 RACE CLASSIFICATION

Faculty	2007				2008*			
	Black	Coloured	Indian	White	Black	Coloured	Indian	White
APPLIED & COMPUTER SCIENCES	3097	17	3	58	3248	18	5	44
ENGINEERING	5132	34	71	368	5379	29	72	416
HUMAN SCIENCES	1423	42	18	189	1618	40	23	169
MANAGEMENT SCIENCES	5750	145	11	129	5769	137	15	79
<b>Grand Total</b>	<b>15402</b>	<b>238</b>	<b>103</b>	<b>744</b>	<b>16014</b>	<b>224</b>	<b>115</b>	<b>708</b>

### RACE CLASSIFICATION (2007)



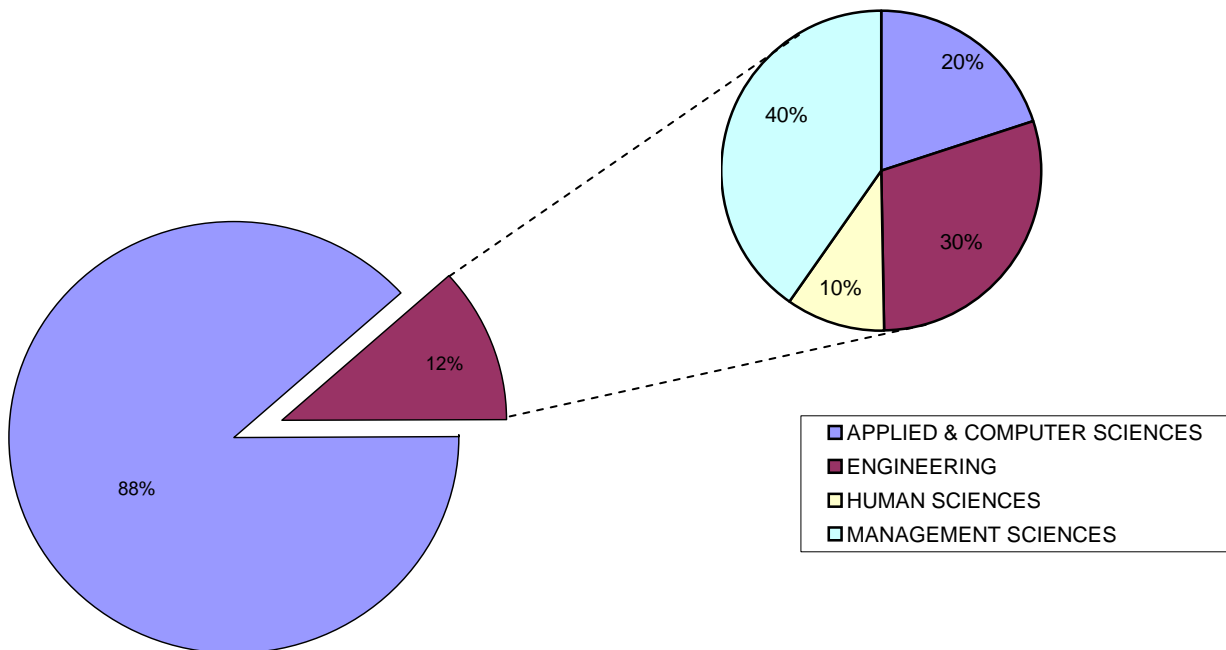
1.\* - Data could change.

2. **Headcount is calculated based on the following criteria:** The primary qualification of the student; the qualification has not been cancelled; the student is registered for a subject.

## 2.6 RESIDENTIAL PROFILE

The graph below indicates that only 12% of all students live in the residences. The smaller Pie chart indicates the faculty in which the student is enrolled. The majority of students living in the residences are enrolled in the Faculty of Management Sciences.

Faculty	2006	2007	2008*
APPLIED & COMPUTER SCIENCES	286	421	412
ENGINEERING	655	627	733
FACULTY OF HUMAN SCIENCES	262	210	209
MANAGEMENT SCIENCES	1074	848	973
<b>Grand Total</b>	<b>2277</b>	<b>2106</b>	<b>2327</b>



1.\* - Data could change.

2. **Headcount is calculated based on the following criteria:** The primary qualification of the student; the qualification has not been cancelled; the student is registered for a subject.

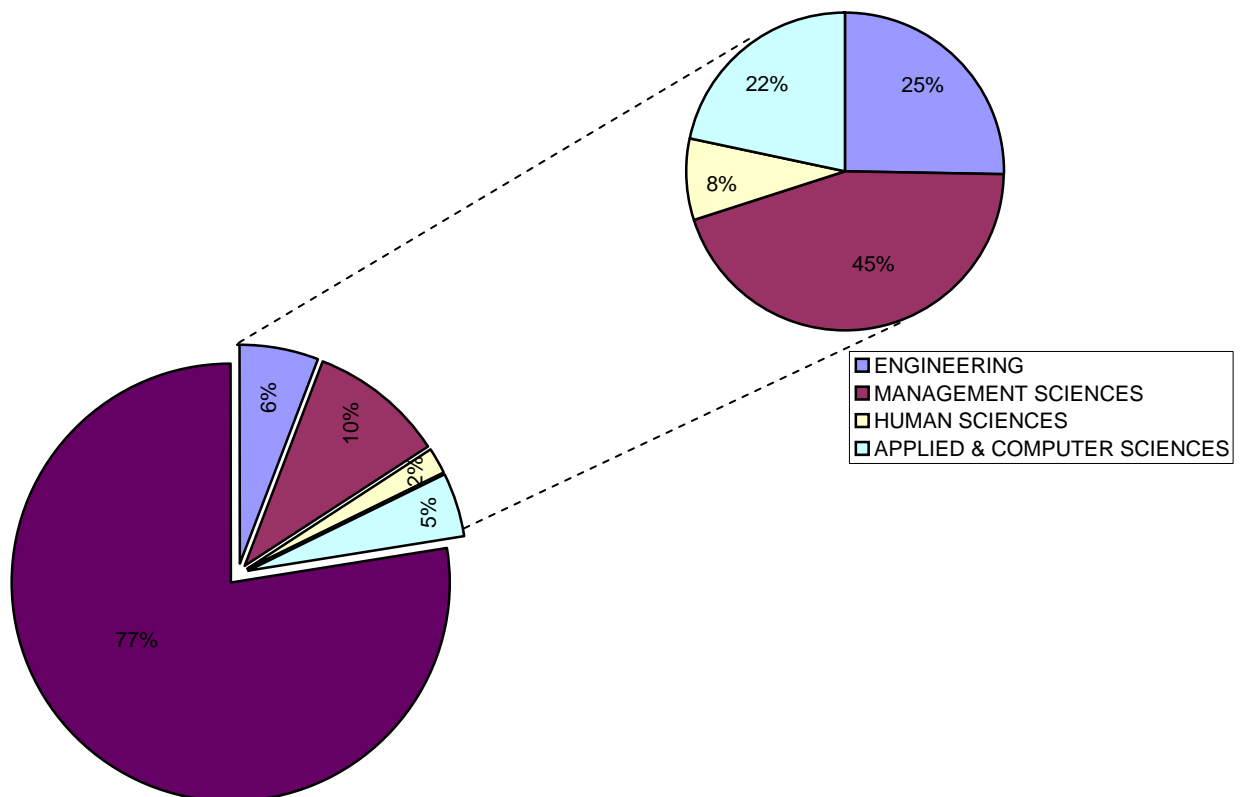


## 2.7 NATIONAL STUDENT FINANCIAL AID SCHEME (NSFAS)

The table below reflects the number of students per faculty who were granted NSFAS funding.

Faculty	2006	2007	2008*
APPLIED & COMPUTER SCIENCES	713	1024	763
ENGINEERING	1345	1196	835
HUMAN SCIENCES	480	386	306
MANAGEMENT SCIENCES	2578	2108	1886
<b>Grand Total</b>	<b>5116</b>	<b>4714</b>	<b>3790</b>

The graph below indicates that only 23% of all students receive NSFAS assistance. The smaller pie chart indicates the faculty in which the student is enrolled.



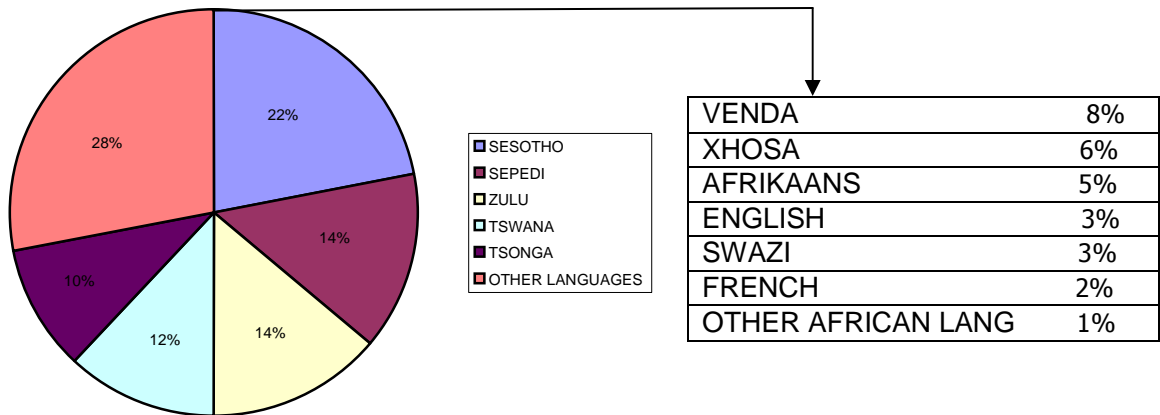
1.\* - Data could change.

2. **Headcount is calculated based on the following criteria:** The primary qualification of the student; the qualification has not been cancelled; the student is registered for a subject.

## 2.8 LANGUAGE

Only 3% of students are English first language speakers, confirming the important role of the English development laboratories instructed by VUT in the past three years.

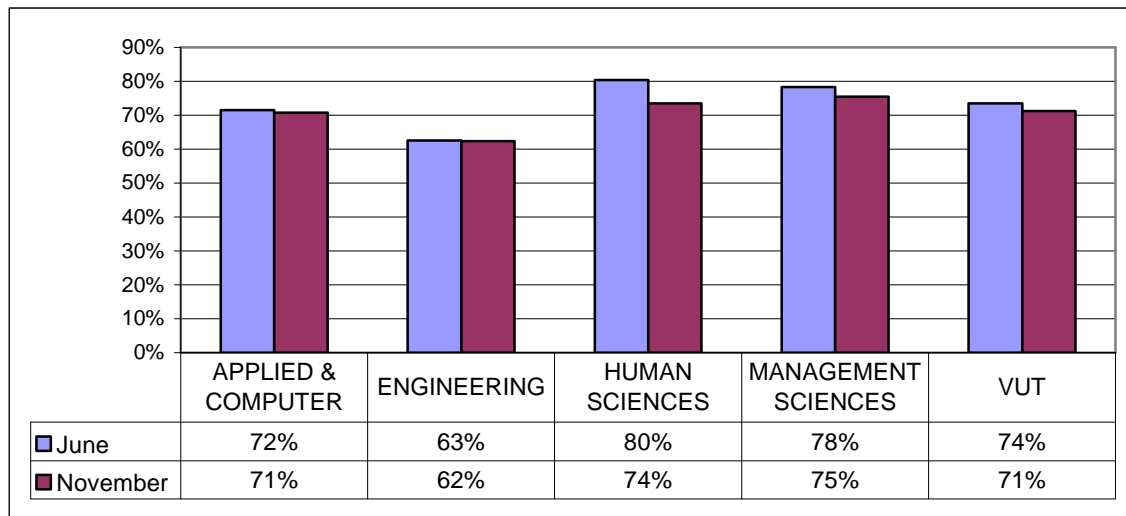
Se-Sotho is the mother tongue of 22% of students at VUT. Sepedi (14%) and Zulu (14%) are the next highest percentage. The Pie chart only reflects languages spoken by 10% or more of the student population.



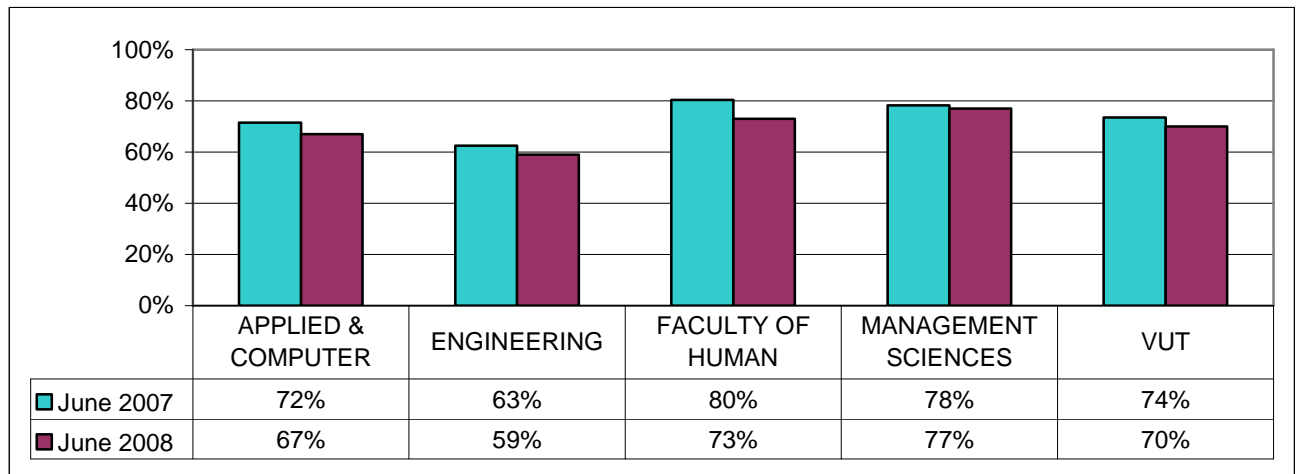
### 3. ACADEMIC PERFORMANCE INDICATORS

#### 3.1. SUCCESS RATE

##### 3.1.1 Success rate per faculty for June and November 2007 exams



##### 3.1.2 Success rate for June 2007 and 2008\*



1.\* - Data could change.

2. Success rate: Number of students that passed expressed as a percentage of the total number of students enrolled minus total number of students that cancelled for the module.

### 3.1.3 SUCCESS RATE FOR JUNE AND NOVEMBER 2007 EXAMS.

<b>FACULTY</b>	<b>DEPARTMENT</b>	<b>JUNE</b>	<b>NOVEMBER</b>
<b>APPLIED &amp; COMPUTER SCIENCES</b>			
		<b>72%</b>	<b>71%</b>
	BIOMEDICAL TECHNOLOGY	78%	76%
	BIOTECHNOLOGY	59%	76%
	CHEMISTRY	72%	70%
	INF & COMM TECH, OFF MAN TECH	77%	77%
	MATHEMATICS	61%	61%
	PHYSICS & NON-DESTRUCT TESTING	69%	59%
	SOFTWARE STUDIES	71%	70%
<b>ENGINEERING</b>			
		<b>63%</b>	<b>62%</b>
	CHEMICAL ENGINEERING	53%	47%
	CIVIL ENGINEERING	66%	72%
	ELECTRONIC ENGINEERING	67%	71%
	INDUSTRIAL ENG. & OPS. MANAG.	76%	74%
	MECHANICAL ENGINEERING	58%	57%
	METALLURGICAL ENGINEERING	56%	63%
	POWER ENGINEERING	51%	54%
	PROCESS CONTROL & COMP SYSTEMS	70%	62%
<b>FACULTY OF HUMAN SCIENCES</b>			
		<b>80%</b>	<b>74%</b>
	COMMUNICATION & LEGAL SERVICES	81%	71%
	HOSPITALITY & TOURISM	78%	82%
	VISUAL ARTS & DESIGN	75%	75%
<b>MANAGEMENT SCIENCES</b>			
		<b>78%</b>	<b>75%</b>
	ACCOUNTANCY	75%	70%
	HR MANAGEMENT	80%	77%
	LOGISTICS	81%	81%
	MARKETING & SPORT MANAGEMENT	81%	81%
	OFFICE & SPORT MANAGEMENT	83%	96%
<b>Grand Total</b>		<b>74%</b>	<b>71%</b>

### 3.1.4 Success rate at the various sites of delivery

Faculty	Campus	2006		2007		2008*	
		Pass Rate	Success Rate	Pass Rate	Success Rate	Pass Rate	Success Rate
<b>APPLIED &amp; COMPUTER SCIENCES</b>		<b>78%</b>	<b>66%</b>	<b>82%</b>	<b>71%</b>	<b>75%</b>	<b>67%</b>
	Ekurhuleni	78%	67%	84%	77%	61%	52%
	North West	79%	70%	79%	71%	0%	0%
	Secunda	80%	63%	79%	65%	72%	60%
	Upington	85%	71%	85%	70%	59%	54%
	Vanderbijlpark	78%	66%	82%	71%	75%	68%
<b>ENGINEERING</b>		<b>75%</b>	<b>59%</b>	<b>78%</b>	<b>63%</b>	<b>75%</b>	<b>59%</b>
	Ekurhuleni	56%	48%	69%	63%	89%	58%
	North West	44%	37%	50%	49%	0%	0%
	Secunda	56%	45%	59%	49%	58%	47%
	Vanderbijlpark	77%	61%	80%	64%	76%	60%
<b>HUMAN SCIENCES</b>		<b>84%</b>	<b>71%</b>	<b>84%</b>	<b>76%</b>	<b>82%</b>	<b>73%</b>
	Ekurhuleni	83%	71%	84%	75%	82%	58%
	North West	73%	62%	86%	83%	90%	75%
	Secunda	81%	68%	81%	67%	77%	71%
	Upington	85%	72%	89%	74%	72%	64%
	Vanderbijlpark	85%	71%	84%	77%	83%	76%
<b>MANAGEMENT SCIENCES</b>		<b>85%</b>	<b>72%</b>	<b>86%</b>	<b>77%</b>	<b>87%</b>	<b>77%</b>
	Ekurhuleni	79%	68%	75%	67%	83%	69%
	North West	66%	57%	74%	67%	91%	82%
	Secunda	74%	63%	74%	66%	72%	63%
	Upington	83%	70%	85%	72%	83%	72%
	Vanderbijlpark	88%	74%	89%	80%	89%	78%
<b>Grand Total</b>		<b>82%</b>	<b>68%</b>	<b>83%</b>	<b>72%</b>	<b>81%</b>	<b>70%</b>

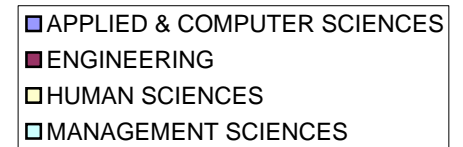
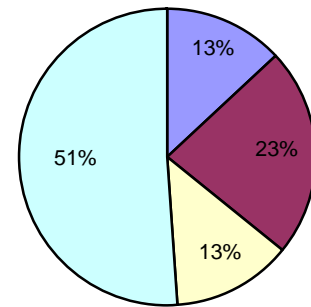
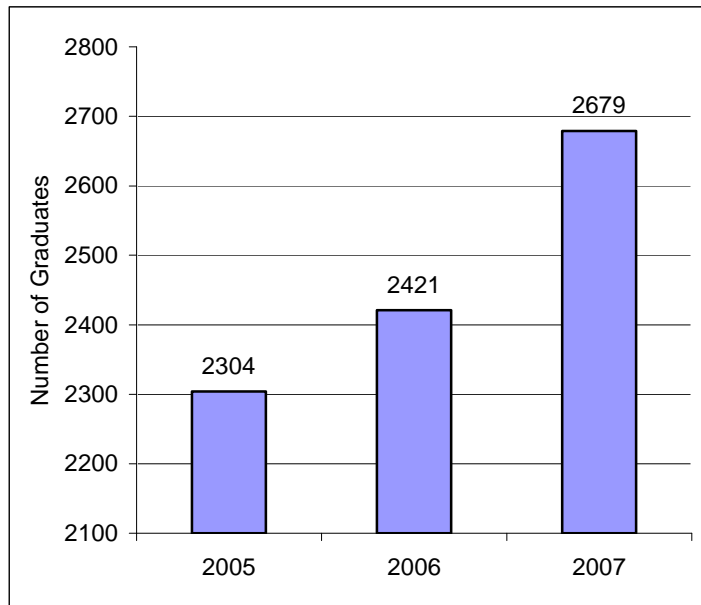
1. \* - Data could change

2. Pass rate: Number of students that passed expressed as a percentage of the number that obtained a year mark to write exam. The pass rate will always be higher than the success rate.

3. Success rate for 2008\* is based on June exams only.

### 3.2 GRADUATES

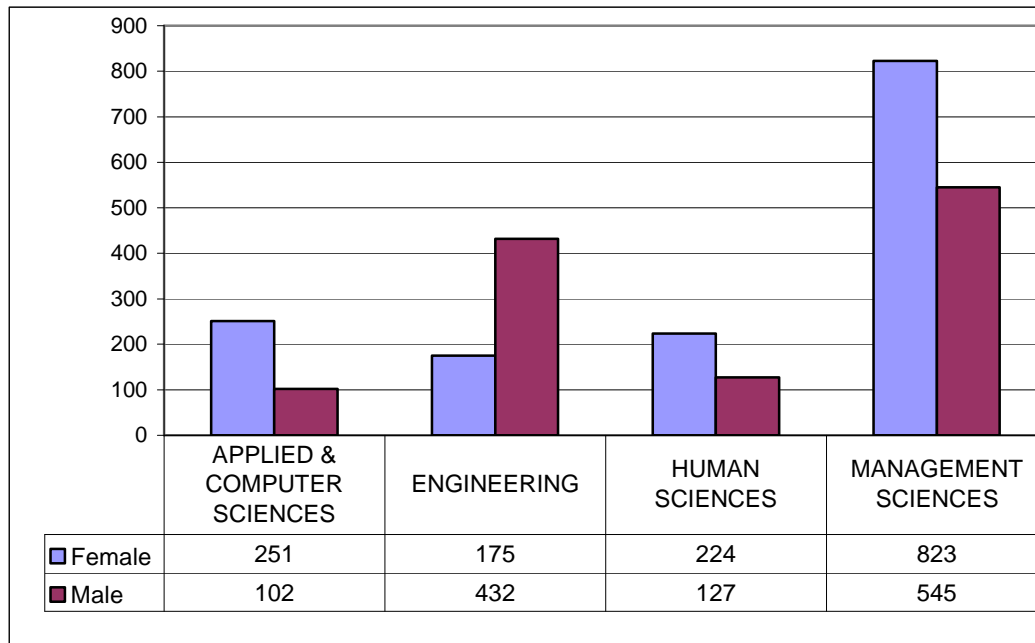
#### 3.2.1 Graduate total (2005-2007) and the distribution across the faculties.



#### 3.2.2 Gender distribution of graduates.

Faculty	2005			2006			2007		
	Female	Male	Total	Female	Male	Total	Female	Male	Total
APPLIED & COMPUTER SCIENCES	130	112	242	146	79	225	251	102	353
ENGINEERING	106	340	446	136	411	547	175	432	607
FACULTY OF HUMAN SCIENCES	230	102	332	202	116	318	224	127	351
MANAGEMENT SCIENCES	814	470	1284	831	500	1331	823	545	1368
<b>Grand Total</b>	<b>1280</b>	<b>1024</b>	<b>2304</b>	<b>1315</b>	<b>1106</b>	<b>2421</b>	<b>1473</b>	<b>1206</b>	<b>2679</b>

### 3.2.3 Gender distribution of graduates per faculty.



## 4. STAFF PROFILE

### 4.1 HEAD COUNT TOTAL OF PERMANENTLY APPOINTED STAFF CATEGORY

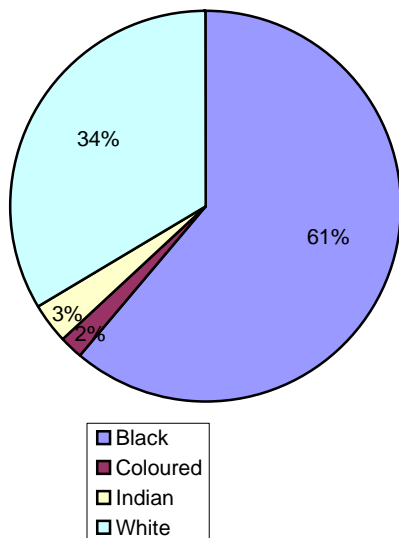
CATEGORY	2005	2006	2007
Instruction/Research Professional	312	301	287
Executive/Administrative/Managerial Professionals	21	20	26
Specialist/Support Professionals	82	85	82
<b>Total Professional Staff</b>	<b>415</b>	<b>406</b>	<b>395</b>
Technical Employees	60	55	56
Non-professional Administrative Employees	205	202	200
Crafts/Trades Employees	4	4	4
Service\Employees	239	256	247
<b>Total Non-Professional Staff</b>	<b>508</b>	<b>517</b>	<b>507</b>
<b>TOTAL PERMANENT STAFF</b>	<b>923</b>	<b>923</b>	<b>902</b>

#### 4.2 FULL-TIME EQUIVALENT STAFF BY CATEGORY

CATEGORY	2005	2006	2007
Instruction/Research Professional	414	429	391
Executive/Administrative/Managerial Professionals	22	22	26
Specialist/Support Professionals	92	106	89
<b>Total Professional Staff</b>	<b>528</b>	<b>557</b>	<b>506</b>
Technical Employees	56	56	57
Non-professional Administrative Employees	352	395	354
Crafts/Trades Employees	4	4	4
Service\Employees	317	358	312
<b>Total Non-Professional Staff</b>	<b>729</b>	<b>813</b>	<b>727</b>
<b>TOTAL STAFF FTE</b>	<b>1257</b>	<b>1370</b>	<b>1233</b>

#### 4.3 EQUITY

Equity profile of permanent staff.



Divisions	Black	Coloured	Indian	White
Applied and Computer Science	45	2	3	32
Engineering	36	1	3	61
Human Science	24	1	6	52
Management Science	31	1	4	27
Non-Academic Divisions	379	11	11	111
<b>Grand Total</b>	<b>515</b>	<b>16</b>	<b>27</b>	<b>283</b>

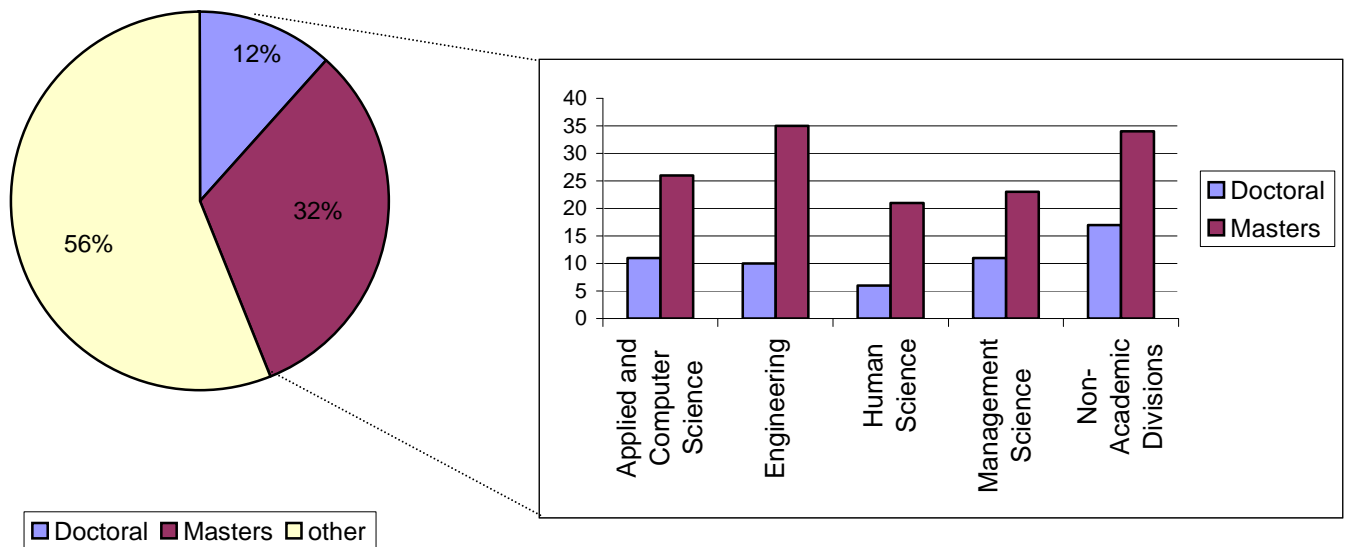
1. Staff FTE- Full-time-equivalent staff. The total number of full-time staff plus the full-time-equivalent of the part-time staff.



#### 4.4 GENDER PROFILE OF PERMANENT STAFF

Divisions	Black			Coloured			Indian			White		
	F	M	Sum	F	M	Sum	F	M	Sum	F	M	Sum
Applied and Computer Science	20	25	45	2		2	1	2	3	22	10	32
Engineering	4	32	36	1		1		3	3	10	51	61
Human Science	17	7	24	1		1	4	2	6	41	11	52
Management Science	12	19	31	1		1	2	2	4	19	8	27
Non-Academic Divisions	216	163	379	8	3	11	6	5	11	82	29	111
<b>Grand Total</b>	<b>269</b>	<b>246</b>	<b>515</b>	<b>13</b>	<b>3</b>	<b>16</b>	<b>13</b>	<b>14</b>	<b>27</b>	<b>174</b>	<b>109</b>	<b>283</b>

#### 4.5 HIGHEST FORMAL QUALIFICATION OF PERMANENT APPOINTED INSTRUCTION/RESEARCH STAFF

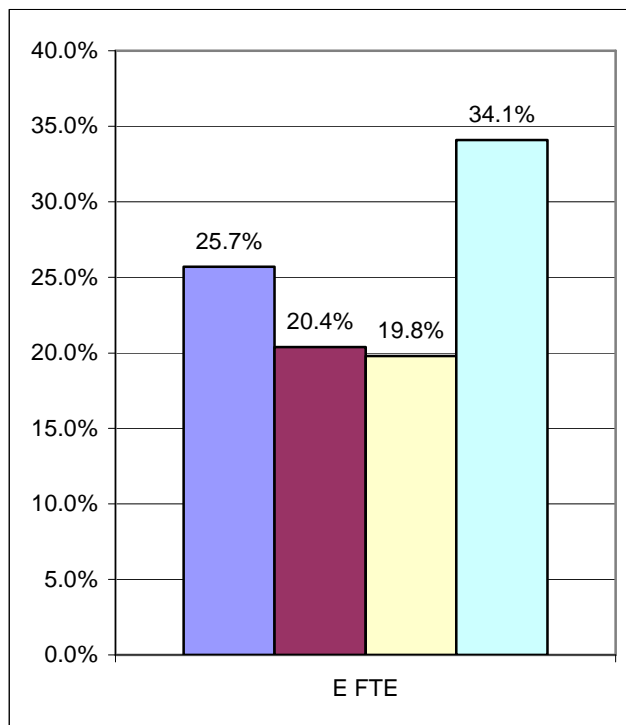


## 5 FUNDING

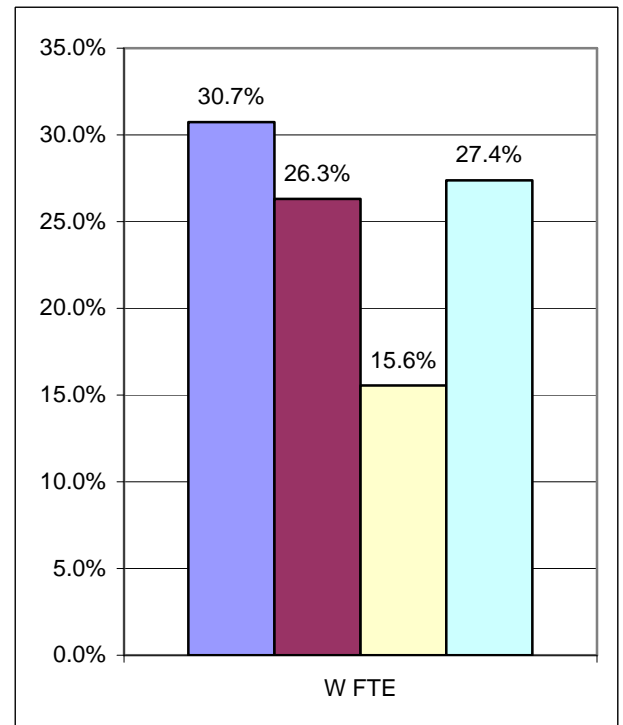
### 5.1 ENROLLED AND WEIGHTED FTE PER FACULTY

FACULTY	2006		2007		2008*	
	E FTE	W FTE	E FTE	W FTE	E FTE	W FTE
APPLIED & COMPUTER SCIENCES	2623	6470	3032	7470	3019	7414
ENGINEERING	2514	6620	2412	6395	2420	6474
HUMAN SCIENCES	2691	4197	2338	3780	2369	3733
MANAGEMENT SCIENCES	4867	7956	4029	6653	4107	6910
<b>Grand Total</b>	<b>12695</b>	<b>25243</b>	<b>11811</b>	<b>24298</b>	<b>11915</b>	<b>24531</b>

**Enrolled FTE**



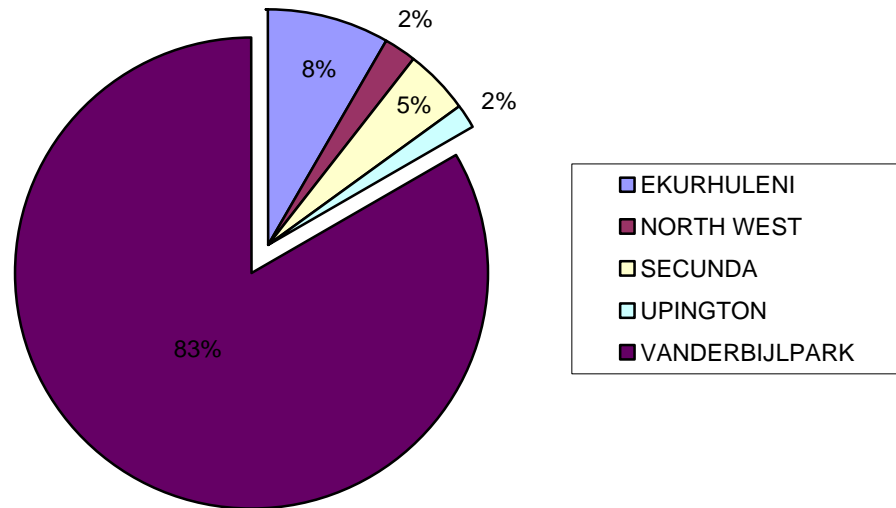
**Weighted FTE**



■ APPLIED & COMPUTER SCIENCES 
 ■ ENGINEERING 
 ■ HUMAN SCIENCES 
 ■ MANAGEMENT SCIENCES

1. \* - Data could change.
2. Enrolled FTE – A numerical designator for the load of an enrolled student based on the weighting of their modules in the curriculum.
3. Weighted FTE - The enrolled FTE weighted by funding groups and module levels.

## 5.2 SUMMARY OF ENROLLED AND WEIGHTED FTE PER CAMPUS



CAMPUS	2006		2007		2008*	
	E FTE	W FTE	E FTE	W FTE	E FTE	W FTE
EKURHULENI	984	1554	982	1477	970	1437
NORTH WEST	508	780	250	363	10	14
SECUNDA	573	1119	554	1111	548	1168
UPINGTON	194	311	181	289	175	272
VANDERBIJLPARK	10436	21479	9843	21058	10212	21639
<b>Grand Total</b>	<b>12695</b>	<b>25243</b>	<b>11811</b>	<b>24298</b>	<b>11915</b>	<b>24531</b>

1. \* - Data could change.

2. Enrolled FTE – A numerical designator for the load of an enrolled student based on the weighting of their modules in the curriculum.

3. Weighted FTE - The enrolled FTE weighted by funding groups and module levels.

## 6. APPROVED PROGRAM QUALIFICATION MIX (PQM) OF THE VAAL UNIVERSITY OF TECHNOLOGY (3-YEAR CYCLE)

Approved Qualification Title	Majors or fields of specialization	Minimum times		
		Total	Formal	Experiential
<b>UNDERGRADUATE DIPLOMA OR CERTIFICATE</b>				
ADVANCED CERTIFICATE IN EDUCATION	0701 Foundations of Education	1	1	0
<b>NATIONAL CERTIFICATE AND HIGHER CERTIFICATE</b>				
NC: DRESMAKING AND PATTERN CONSTRUCTION	1001 Clothing and Textiles	2	2	0
NHC: ACCOUNTANCY	0401 Accounting	2	2	0
NHC: FINANCIAL INFORMATION SYSTEMS	0401 Accounting	2	2	0
<b>NATIONAL DIPLOMA</b>				
ND: AGRICULTURAL MANAGEMENT	0106 Plant Sciences, 0104 Animal Sciences, 0409 Management	3	2.2	0.8
ND: BUILDING	0204 Construction & Design Implementation	3	2.5	0.5
ND: GRAPHIC DESIGN	0305 Visual Arts	3	3	0
ND: CERAMIC DESIGN	0305 Visual Arts	3	3	0
ND: FINE ART	0305 Visual Arts	3	3	0
ND: PHOTOGRAPHY	0305 Visual Arts, 0506 Film as Comm., 1105 Graphic Arts	3	3	0
ND: COST AND MANAGEMENT ACCOUNTING	0401 Accounting	3	3	0
ND: FINANCIAL INFORMATION SYSTEMS	0401 Accounting, 0605 Info. & Database Systems	3	3	0
ND: HUMAN RESOURCES MANAGEMENT	0411 Personnel Mngmt. & Admin.	3	3	0
ND: INTERNAL AUDITING	0401 Accounting	3	3	0
ND: LABOUR RELATIONS	0411 Personnel Management & Admin., 1303 Mercantile Law	3	3	0
ND: LOGISTICS	0409 Management	3	3	0
ND: MANAGEMENT OF TRAINING	0409 Management, 0411 Personnel Mngmt. & Admin.	3	3	0
ND: MARKETING	0409 Management, 0410 Marketing	3	3	0
ND: OFFICE MANAGEMENT & TECHNOLOGY	0402 Administrative & Office Services, 0602 Computer Ops. & Operations Control	3	2.8	0.2

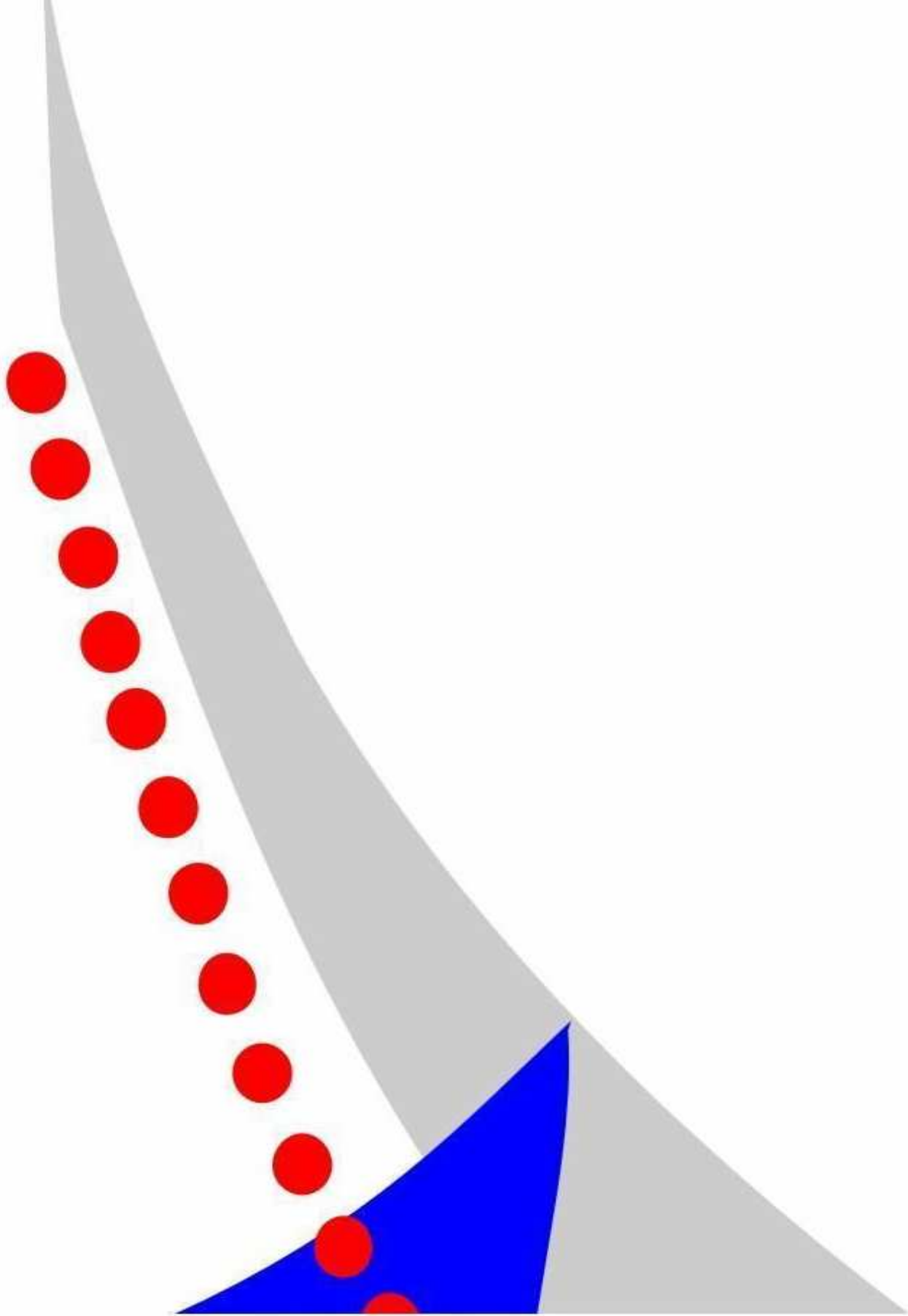
ND: RETAIL BUSINESS MANAGEMENT	0409 Management, 0410 Marketing	3	3	0
ND: SAFETY MANAGEMENT	0411 Personnel Management & Admin., 1304 Private Law	3	3	0
ND: SMALL BUSINESS MANAGEMENT	0409 Management, 0410 Marketing	3	2.5	0.5
ND: SPORT EXERCISE AND TECHNOLOGY	1903 Sport	3	3	0
ND: OPERATIONS MANAGEMENT	0409 Management	3	3	0
ND: PUBLIC RELATIONS MANAGEMENT	0517 Public Relations	3	2.5	0.5
ND: ENGINEERING: COMPUTER SYSTEMS	0603 Computer Hardware Systems	3	2	1
ND: INFORMATION TECHNOLOGY	0605 Info. & Database Systems, 0607 Programming Lang.	3	3	0
ND: ENGINEERING: CHEMICAL	0805 Chemical Engineering & Technology	3	2	1
ND: ENGINEERING: CIVIL	0806 Civil Engineering & Technology	3	2	1
ND: ENGINEERING: ELECTRICAL	0808 Electrical Engineering & Technology	3	2	1
ND: ENGINEERING: INDUSTRIAL	0814 Industrial Eng. & Tech.	3	2	1
ND: ENGINEERING: MECHANICAL	0819 Mechanical Eng. & Tech.	3	2	1
ND: ENGINEERING: METALLURGY	0820 Metallurgical Eng. & Tech.	3	2	1
ND: BIOMEDICAL TECHNOLOGY	0901 Basic Health Care Sciences	3	2.5	0.5
ND: CLOTHING	1001 Clothing & Textiles	3	3	0
ND: FASHION	1001 Clothing & Textiles	3	3	0
N DIP: FOOD AND BEVERAGE MANAGEMENT	1003 Food & Nutrition, 1007 Inst. Housekeeping & Food Service Mngmt.	3	2.5	0.5
N DIP: FOOD SERVICE MANAGEMENT	1003 Food & Nutrition, 1007 Inst. Housekeeping & Food Service Mngmt.	3	2	1
ND: ANALYTICAL CHEMISTRY	1504 Chemistry	3	2.5	0.5
ND: BIOTECHNOLOGY	1503 Biological Sciences, 1504 Chemistry	3	2	1
ND: NON-DESTRUCTIVE TESTING	0814 Industrial Engineering & Technology	3	2	1
ND: SPORT MANAGEMENT	1903 Sport	3	3	0
ND: TOURISM MANAGEMENT	2203 Geography	3	2.5	0.5
<b>NATIONAL HIGHER DIPLOMA</b>				

NHD: COMMUNITY NURSING	0907 Public Health	1	1	0
POST GRADUATE CERTIFICATE IN EDUCATION	0701 Foundations of Education	1	1	0
<b>BACCALAUREUS TECHNOLOGIAE DEGREE</b>				
B TECH: FINE ART	0305 Visual Arts	1	1	0
B TECH: CERAMIC DESIGN	1105 Graphic Arts	1	1	0
B TECH: GRAPHIC DESIGN	0305 Visual Arts, 1105 Graphic Arts	1	1	0
B TECH: MULTIMEDIA	0305 Visual Arts	1	1	0
B TECH: PHOTOGRAPHY	0305 Visual Arts	1	1	0
B TECH: BUSINESS ADMINISTRATION	0409 Management	1	1	0
B TECH: COST AND MANAGEMENT ACCOUNTING	0401 Accounting, 0409 Management	1	1	0
B TECH: FINANCIAL INFORMATION SYSTEMS	0401 Accounting,	1	1	0
B TECH: HUMAN RESOURCE DEVELOPMENT	0411 Personnel Management & Administration	1	1	0
B TECH: HUMAN RESOURCES MANAGEMENT	0411 Personnel Management & Admin.	1	1	0
B TECH: INTERNAL AUDITING	0401 Accounting	1	1	0
B TECH: LABOUR RELATIONS MANAGEMENT	0411 Personnel Management & Administration	1	1	0
B TECH: LOGISTICS	0409 Management, 0410 Marketing	1	1	0
B TECH: MARKETING	0410 Marketing	1	1	0
B TECH: OFFICE MANAGEMENT AND TECHNOLOGY	0402 Admin. & Office Services	1	1	0
B TECH: RETAIL BUSINESS MANAGEMENT	0410 Marketing	1	1	0
B TECH: OPERATIONS MANAGEMENT	0403 Banking & Finance, 0409 Management	1	1	0
B TECH: SPORT MANAGEMENT	1903 Sport	1	1	0
B TECH: PUBLIC RELATIONS MANAGEMENT	0517 Public Relations	1	1	0
B TECH: COMPUTER SYSTEMS	0603 Computer Hardware Systems, 0605 Info. & Database Systems, 0607 Programming Lang., 0808 Electrical Eng. & Tech.	1	1	0
B TECH: INFORMATION TECHNOLOGY	0605 Info. & Database Systems, 0607 Programming Lang., 0608 Programming Systems	1	1	0
B TECH: ENGINEERING: CHEMICAL	0805 Chemical Engineering & Technology	1	1	0

B TECH: ENGINEERING: CIVIL	0806 Civil Eng. & Tech	1	1	0
B TECH: ENGINEERING: ELECTRICAL	0808 Electrical Engineering & Technology	1	1	0
B TECH: ENGINEERING: INDUSTRIAL	0814 Industrial Engineering & Technology	1	1	0
B TECH: ENGINEERING: MECHANICAL	0819 Mechanical Eng. & Tech.	1	1	0
B TECH: ENGINEERING: METALLURGY	0820 Metallurgical Eng. & Tech.	1	1	0
B TECH: NURSING	0907 Public Health	1	1	0
B. TECH: BIOMEDICAL TECHNOLOGY	0902 Clinical Health Sciences	1	1	0
B TECH: FASHION	1001 Clothing & Textiles	1	1	0
B TECH: FOOD & BEVERAGE MANAGEMENT	1003 Food & Nutrition, 1007 Inst. Housekeeping & Food Service Mngmt.	1	1	0
B TECH: CHEMISTRY	1504 Chemistry	1	1	0
B. TECH: BIOTECHNOLOGY	1503 Biological Sc., 1504 Chemistry	1	1	0
B TECH: TOURISM MANAGEMENT	2203 Geography	1	1	0
B TECH: CLOTHING	1001 Clothing and Textiles	1	1	0
B TECH: FOOD SERVICE MANAGEMENT	1003 Food Service Management and Food Nutrition	1	1	0
<b>MAGISTER TECHNOLOGIAE</b>				
M TECH: CERAMIC DESIGN	0305 Visual Arts	1	1	0
M TECH: FINE ART	0305 Visual Arts	1	1	0
M TECH: GRAPHIC DESIGN	0305 Visual Arts	1	1	0
M TECH: MULTIMEDIA	0305 Visual Arts	1	1	0
M TECH: PHOTOGRAPHY	0305 Visual Arts	1	1	0
M TECH: BUSINESS ADMINISTRATION	0409 Management	1	1	0
M TECH: OFFICE MANAGEMENT AND TECHNOLOGY	0402 Administrative & Office Services	1	1	0
M TECH: COST & MANAGEMENT ACCOUNTING	0401 Accounting	1	1	0
M TECH: HUMAN RESOURCES MANAGEMENT	0411 Personnel Management & Admin.	1	1	0
M TECH: LABOUR RELATIONS MANAGEMENT	0411 Personnel Management and Admin	1	1	0
M TECH: LOGISTICS	0410 Marketing	1	1	0

M TECH: MARKETING	0410 Marketing	1	1	0
M TECH: PUBLIC RELATIONS MANAGEMENT	0517 Public Relations	1	1	0
M TECH: INFORMATION TECHNOLOGY	0605 Information & Database Systems	1	1	0
M TECH: ENGINEERING: CHEMICAL	0805 Chemical Engineering & Technology	1	1	0
M TECH: ENGINEERING: CIVIL	0806 Civil Engineering & Technology	1	1	0
M TECH: ENGINEERING: ELECTRICAL	0808 Electrical Engineering & Technology	1	1	0
M TECH: ENGINEERING: INDUSTRIAL	0814 Industrial Engineering & Technology	1	1	0
M TECH: ENGINEERING: MECHANICAL	0819 Mechanical Engineering & Technology	1	1	0
M TECH: ENGINEERING: METALLURGY	0820 Metallurgical Eng. & Tech.	1	1	0
M TECH: FOOD & BEVERAGE MANAGEMENT	1007 Institutional Housekeeping & Food Service Management	1	1	0
M TECH: BIOTECHNOLOGY	1503 Biological Sciences	1	1	0
M TECH: CHEMISTRY	1504 Chemistry	1	1	0
M TECH: TOURISM & HOSPITALITY MANAGEMENT	0409 Management	1	1	0
M TECH: FASHION	0304 Clothing and Textile	1	1	0
M TECH: FOOD SERVICE MANAGEMENT	1007 Institutional Housekeeping & Food Service Management	1	1	0
<b>DOCTOR TECHNOLOGIAE</b>				
D TECH: FINE ART	0305 Visual Arts	2	2	0
D TECH: PHOTOGRAPHY	0305 Visual Arts	2	2	0
D TECH: BUSINESS	0401 Accounting	2	2	0
D TECH: MARKETING	0410 Marketing	2	2	0
D TECH: INFORMATION SYSTEMS	0605 Information & Database Systems	2	2	0
D TECH: ENGINEERING: ELECTRICAL	0808 Electrical Engineering & Technology	2	2	0
D. TECH.: ENGINEERING: CIVIL	0806 Civil Engineering & Technology	2	2	0
D. TECH.: ENGINEERING:MECHANICAL	0819 Mechanical Engineering & Technology	2	2	0
D TECH: FOOD SERVICE MANAGEMENT	1003 Food & Nutrition	2	2	0





**For any enquiries, contact:**

**Prof P Naidoo, Deputy Vice-Chancellor : Resources and Planning, Tel: 016 950 9216**  
**Mr Y Naidu, Information Analyst : Institutional Planning, Tel: 016 950 9219**  
**Mr P Maleke, Jnr Information Analyst : Institutional Planning Unit, Tel: 016 950 9229**