

**Vaal University of Technology**

Institutional Planning Unit  
Resource and Planning Division

## Contents

Success rate per campus (2007 – 2009) .....	3
Success rate per faculty (2007 – 2009) .....	4
Distribution of success rate across faculties per campus (2007 – 2009) .....	5
Success rate per faculty per gender (2007 – 2009) .....	6
Success rate per gender (2007 – 2009) .....	6
Gender distribution of success rate across faculties per campus (2007 – 2009) .....	7
Success rate per race (2007 – 2009) .....	8
Distribution of success rate across race per campus (2007 – 2009) .....	9
Distribution of success rate across race per faculty (2007 – 2009) .....	10
Success rate per faculty per SA Students vs International Students (2007 – 2009) .....	11
Success rate per SA Students vs International Students (2007 – 2009) .....	11
Success rate per department (2007-2009) .....	12
Distribution of success rate across department per campus (2007 – 2009) .....	13
Graduates per faculty (2007 – 2009) .....	16
Graduate (2007 – 2009) .....	16
Graduation rate per faculty (2007 – 2009) .....	17
Headcount across faculties (2007 – 2009) .....	18
Headcount percentage increase/decrease per campus (2007 – 2009) .....	18
Headcount percentage increase/decrease per campus (2007 – 2009) .....	19
Graduate increase/decrease per faculty (2007 – 2009) .....	20
Headcount percentage increase/decrease per faculty (2007 – 2009) .....	20
Headcount vs graduation percentage increase/decrease per faculty (2008- 2009) .....	21

## Success Rate

Success rate per campus (2007 – 2009)

Table1:

Campus	Year		
	2007	2008	2009
Educity	75.9%	76.5%	76.6%
Ekurhuleni	71.2%	68.7%	64.9%
Secunda	61.9%	60.5%	54.4%
Uppington	73.0%	72.6%	71.0%
Vanderbijlpark	72.7%	73.1%	73.8%
<b>Grand Total</b>	<b>72.7%</b>	<b>73.0%</b>	<b>72.8%</b>

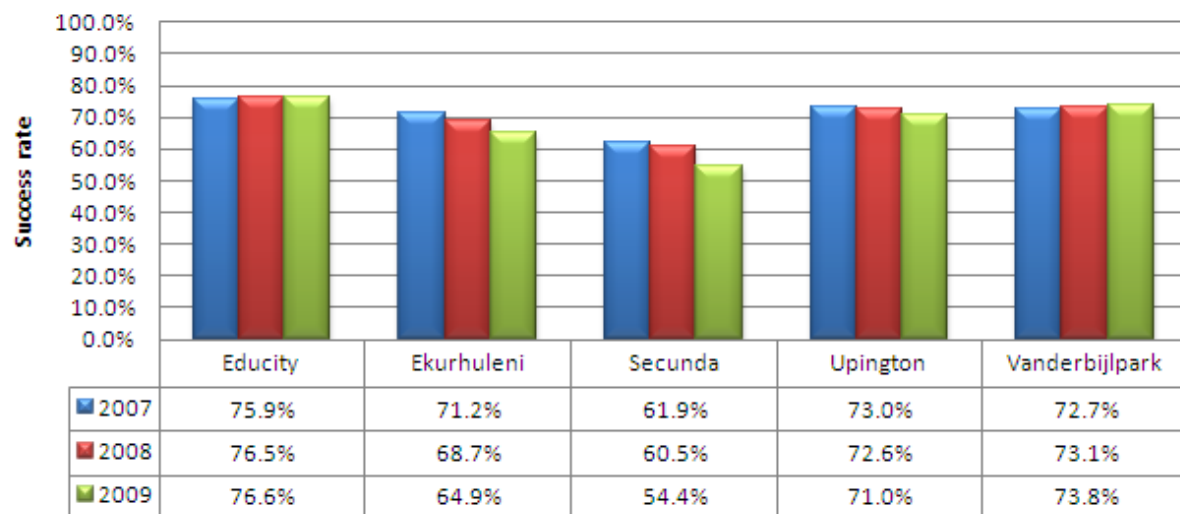


Figure 1

1. **Success rate:** Number of students that passed expressed as a percentage of the total number of students enrolled minus total number of students that cancelled for the module.

Success rate per faculty (2007 – 2009)

Table 2:

Faculty	Year		
	2007	2008	2009
APPLIED & COMPUTER SCIENCES	71.5%	71.0%	72.6%
ENGINEERING	63.4%	63.5%	66.0%
HUMAN SCIENCES	76.7%	78.3%	79.0%
MANAGEMENT SCIENCES	77.0%	77.2%	72.9%
Grand Total	<b>72.7%</b>	<b>73.0%</b>	<b>72.8%</b>

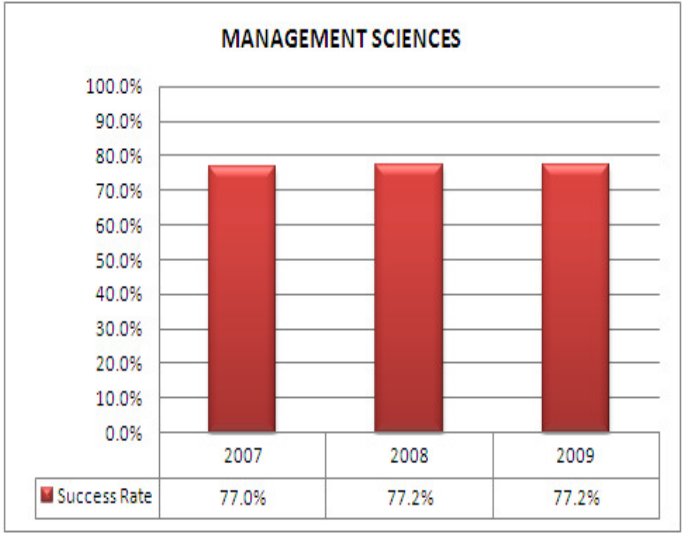
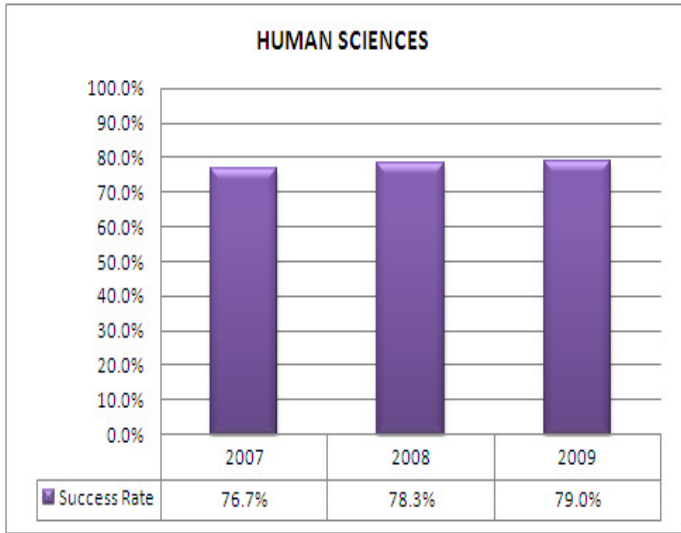
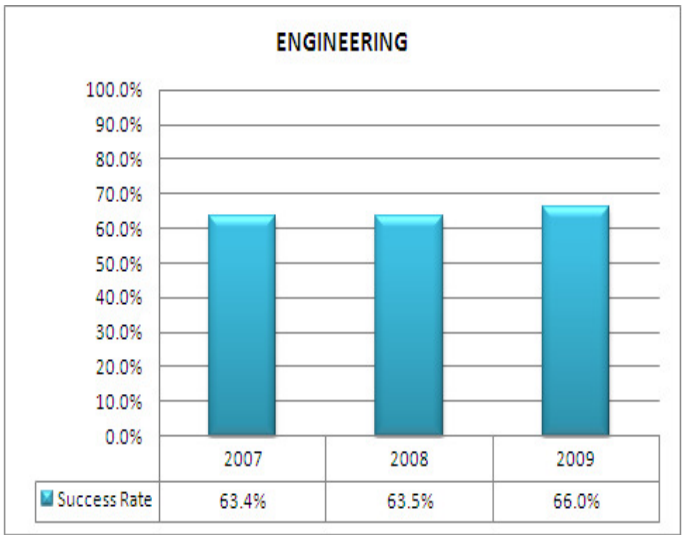
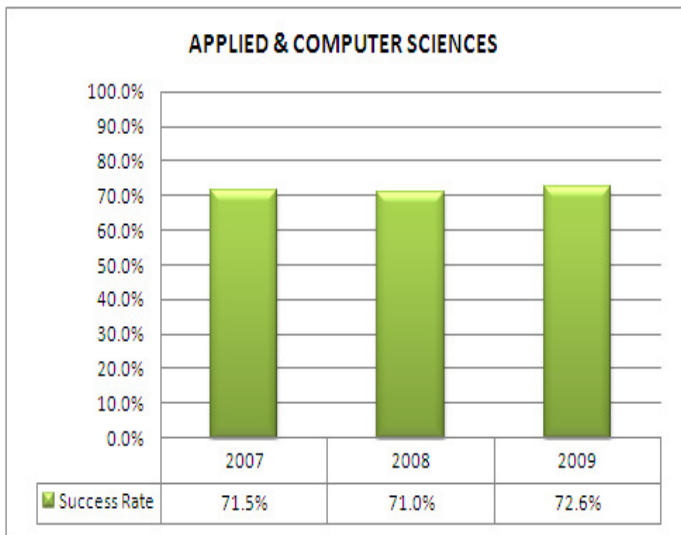


Figure 2

Distribution of success rate across faculties per campus (2007 – 2009)

Table 3:

Campus	Year		
	2007	2008	2009
<b>APPLIED &amp; COMPUTER SCIENCES</b>	<b>71.5%</b>	<b>71.0%</b>	<b>72.6%</b>
Educity	68.5%	70.0%	82.1%
Ekurhuleni	76.9%	77.4%	74.0%
Secunda	65.3%	59.6%	49.9%
Upington	70.7%	77.0%	77.5%
Vanderbijlpark	71.8%	71.0%	72.3%
<b>ENGINEERING</b>	<b>63.4%</b>	<b>63.5%</b>	<b>66.0%</b>
Ekurhuleni	63.3%	60.4%	71.6%
Secunda	48.7%	50.4%	51.1%
Vanderbijlpark	64.2%	64.4%	66.9%
<b>HUMAN SCIENCES</b>	<b>76.7%</b>	<b>78.3%</b>	<b>79.0%</b>
Educity	69.2%	71.4%	75.1%
Ekurhuleni	75.1%	69.0%	59.9%
Secunda	66.9%	71.7%	61.6%
Upington	75.5%	68.3%	78.0%
Vanderbijlpark	79.9%	83.0%	85.2%
<b>MANAGEMENT SCIENCES</b>	<b>77.0%</b>	<b>77.2%</b>	<b>72.9%</b>
Educity	79.8%	79.6%	76.2%
Ekurhuleni	66.9%	64.8%	60.9%
Secunda	65.8%	61.5%	54.4%
Upington	72.2%	73.6%	66.2%
Vanderbijlpark	78.7%	79.6%	74.8%
<b>Grand Total</b>	<b>72.7%</b>	<b>73.0%</b>	<b>72.8%</b>

1. **Success rate:** Number of students that passed expressed as a percentage of the total number of students enrolled minus total number of students that cancelled for the module.

Success rate per faculty per gender (2007 – 2009)

Table 4:

Faculty	2007			2008			2009		
	Female	Male	Total	Female	Male	Total	Female	Male	Total
APPLIED & COMPUTER SCIENCES	73.3%	69.6%	71.5%	73.0%	69.1%	71.0%	75.5%	70.0%	72.6%
ENGINEERING	65.0%	62.8%	63.4%	64.1%	63.3%	63.5%	66.1%	65.9%	66.0%
HUMAN SCIENCES	78.3%	74.6%	76.7%	79.1%	77.3%	78.3%	79.8%	78.0%	79.0%
MANAGEMENT SCIENCES	77.8%	76.0%	77.0%	78.3%	75.6%	77.2%	73.7%	71.8%	72.9%
<b>Grand Total</b>	<b>75.3%</b>	<b>70.2%</b>	<b>72.7%</b>	<b>75.6%</b>	<b>70.6%</b>	<b>73.0%</b>	<b>74.9%</b>	<b>70.7%</b>	<b>72.8%</b>

Success rate per gender (2007 – 2009)

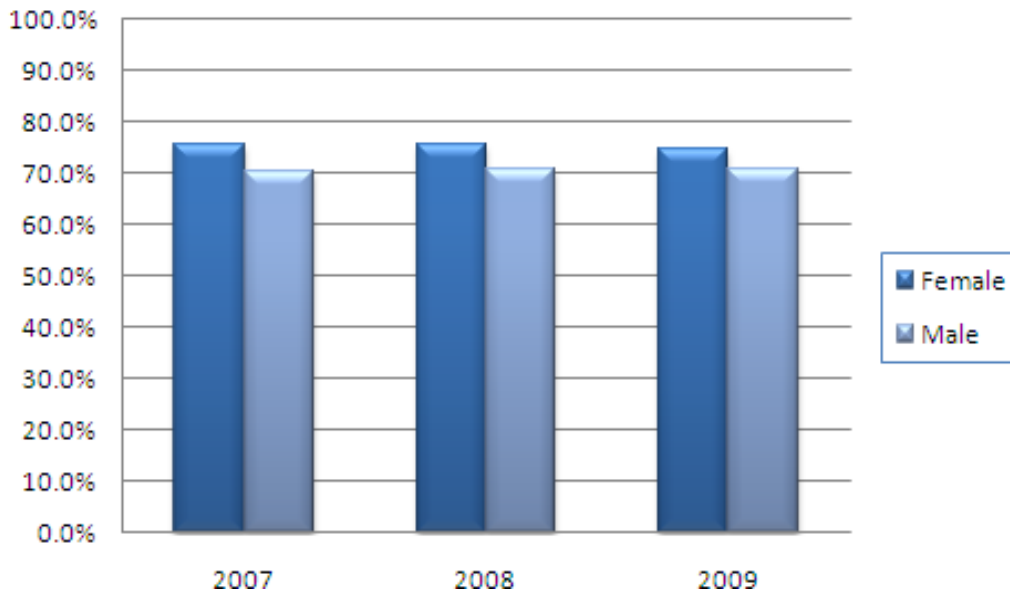


Figure 4

1. **Success rate:** Number of students that passed expressed as a percentage of the total number of students enrolled minus total number of students that cancelled for the module.

Gender distribution of success rate across faculties per campus (2007 – 2009)

Table 4:

Faculty	2007			2008			2009		
	Female	Male	Total	Female	Male	Total	Female	Male	Total
<b>APPLIED &amp; COMPUTER SCIENCES</b>	<b>73.3%</b>	<b>69.6%</b>	<b>71.5%</b>	<b>73.0%</b>	<b>69.1%</b>	<b>71.0%</b>	<b>75.5%</b>	<b>70.0%</b>	<b>72.6%</b>
Educity	69.1%	66.7%	68.5%	69.2%	71.9%	70.0%	80.8%	84.8%	82.1%
Ekurhuleni	78.9%	73.9%	76.9%	80.4%	74.1%	77.4%	77.0%	70.9%	74.0%
Secunda	69.5%	63.2%	65.3%	66.8%	57.2%	59.6%	51.1%	49.3%	49.9%
Upington	74.6%	69.0%	70.7%	76.4%	77.6%	77.0%	81.1%	73.2%	77.5%
Vanderbijlpark	73.9%	70.0%	71.8%	73.2%	69.1%	71.0%	75.0%	70.0%	72.3%
<b>ENGINEERING</b>	<b>65.0%</b>	<b>62.8%</b>	<b>63.4%</b>	<b>64.1%</b>	<b>63.3%</b>	<b>63.5%</b>	<b>66.1%</b>	<b>65.9%</b>	<b>66.0%</b>
Ekurhuleni	60.2%	65.4%	63.3%	54.1%	64.1%	60.4%	74.1%	69.8%	71.6%
Secunda	45.8%	49.7%	48.7%	51.7%	49.8%	50.4%	49.5%	51.7%	51.1%
Vanderbijlpark	66.2%	63.5%	64.2%	65.2%	64.2%	64.4%	67.2%	66.9%	66.9%
<b>HUMAN SCIENCES</b>	<b>78.3%</b>	<b>74.6%</b>	<b>76.7%</b>	<b>79.1%</b>	<b>77.3%</b>	<b>78.3%</b>	<b>79.8%</b>	<b>78.0%</b>	<b>79.0%</b>
Educity	69.6%	68.4%	69.2%	71.8%	70.5%	71.4%	76.2%	73.5%	75.1%
Ekurhuleni	74.7%	75.8%	75.1%	69.5%	68.2%	69.0%	61.1%	58.0%	59.9%
Secunda	71.9%	62.3%	66.9%	68.1%	75.1%	71.7%	61.5%	61.8%	61.6%
Upington	76.3%	73.9%	75.5%	64.5%	79.1%	68.3%	76.9%	81.5%	78.0%
Vanderbijlpark	82.5%	76.9%	79.9%	85.1%	80.5%	83.0%	86.3%	83.9%	85.2%
<b>MANAGEMENT SCIENCES</b>	<b>77.8%</b>	<b>76.0%</b>	<b>77.0%</b>	<b>78.3%</b>	<b>75.6%</b>	<b>77.2%</b>	<b>73.7%</b>	<b>71.8%</b>	<b>72.9%</b>
Educity	79.9%	79.5%	79.8%	80.3%	78.6%	79.6%	76.6%	75.6%	76.2%
Ekurhuleni	67.0%	66.7%	66.9%	66.4%	62.1%	64.8%	63.0%	57.4%	60.9%
Secunda	65.7%	66.0%	65.8%	61.7%	61.1%	61.5%	53.9%	55.0%	54.4%
Upington	72.4%	71.9%	72.2%	74.3%	72.7%	73.6%	65.3%	67.8%	66.2%
Vanderbijlpark	80.6%	76.2%	78.7%	81.6%	77.2%	79.6%	76.5%	72.6%	74.8%
<b>Grand Total</b>	<b>75.3%</b>	<b>70.2%</b>	<b>72.7%</b>	<b>75.6%</b>	<b>70.6%</b>	<b>73.0%</b>	<b>74.9%</b>	<b>70.7%</b>	<b>72.8%</b>

1. **Success rate:** Number of students that passed expressed as a percentage of the total number of students enrolled minus total number of students that cancelled for the module.

Success rate per race (2007 – 2009)

Table 5:

Race	Year		
	2007	2008	2009
BLACK	72.7%	72.9%	73.0%
COLOURED	74.6%	72.9%	69.2%
INDIAN	75.5%	74.1%	61.8%
WHITE	73.4%	74.8%	69.4%
<b>Grand Total</b>	<b>72.7%</b>	<b>73.0%</b>	<b>72.8%</b>

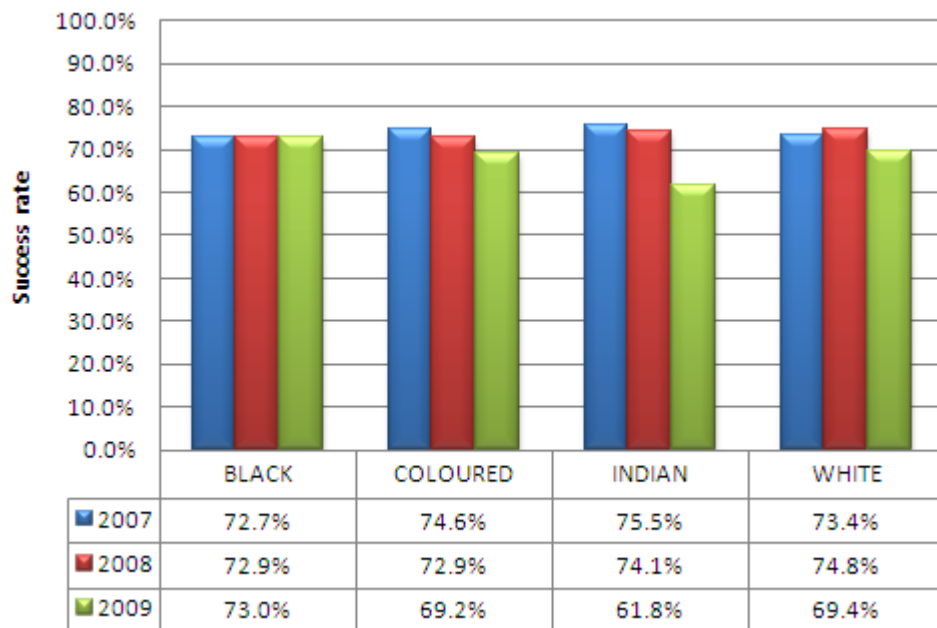


Figure 5

1. **Success rate:** Number of students that passed expressed as a percentage of the total number of students enrolled minus total number of students that cancelled for the module.



Distribution of success rate across race per campus (2007 – 2009)

Table 6:

Race	Year		
	2007	2008	2009
<b>BLACK</b>	<b>72.7%</b>	<b>72.9%</b>	<b>73.0%</b>
Educity	75.7%	76.2%	77.0%
Ekurhuleni	71.1%	68.6%	64.7%
Secunda	60.8%	59.1%	53.3%
Upington	65.7%	64.4%	69.3%
Vanderbijlpark	72.6%	73.1%	73.9%
<b>COLOURED</b>	<b>74.6%</b>	<b>72.9%</b>	<b>69.2%</b>
Educity	78.3%	86.1%	59.3%
Ekurhuleni	87.5%	68.4%	90.2%
Secunda	57.4%	53.6%	46.0%
Upington	74.9%	71.8%	69.7%
Vanderbijlpark	76.6%	77.7%	75.3%
<b>INDIAN</b>	<b>75.5%</b>	<b>74.1%</b>	<b>61.8%</b>
Educity	94.8%	100.0%	44.4%
Ekurhuleni	100.0%	90.0%	50.0%
Secunda	71.4%	68.0%	63.0%
Upington	100.0%		
Vanderbijlpark	71.6%	73.7%	64.1%
<b>WHITE</b>	<b>73.4%</b>	<b>74.8%</b>	<b>69.4%</b>
Educity	83.8%	88.1%	51.0%
Ekurhuleni	65.4%	75.0%	96.4%
Secunda	66.5%	68.5%	60.8%
Upington	70.1%	86.8%	87.7%
Vanderbijlpark	74.0%	73.2%	72.9%
<b>Grand Total</b>	<b>72.7%</b>	<b>73.0%</b>	<b>72.8%</b>

1. **Success rate:** Number of students that passed expressed as a percentage of the total number of students enrolled minus total number of students that cancelled for the module.

Distribution of success rate across race per faculty (2007 – 2009)

Table 7:

Race	Year		
	2007	2008	2009
<b>BLACK</b>	<b>72.7%</b>	<b>72.9%</b>	<b>73.0%</b>
APPLIED & COMPUTER SCIENCES	71.6%	71.0%	72.8%
ENGINEERING	63.2%	63.3%	65.9%
HUMAN SCIENCES	76.6%	78.3%	79.1%
MANAGEMENT SCIENCES	77.1%	77.1%	73.4%
<b>COLOURED</b>	<b>74.6%</b>	<b>72.9%</b>	<b>69.2%</b>
APPLIED & COMPUTER SCIENCES	73.1%	75.1%	75.5%
ENGINEERING	58.0%	66.4%	65.5%
HUMAN SCIENCES	79.1%	68.1%	74.8%
MANAGEMENT SCIENCES	74.4%	75.9%	64.8%
<b>INDIAN</b>	<b>75.5%</b>	<b>74.1%</b>	<b>61.8%</b>
APPLIED & COMPUTER SCIENCES	71.3%	64.0%	52.6%
ENGINEERING	60.2%	58.7%	55.4%
HUMAN SCIENCES	83.9%	88.8%	78.7%
MANAGEMENT SCIENCES	95.6%	83.8%	63.7%
<b>WHITE</b>	<b>73.4%</b>	<b>74.8%</b>	<b>69.4%</b>
APPLIED & COMPUTER SCIENCES	68.1%	67.7%	65.7%
ENGINEERING	68.0%	69.3%	69.0%
HUMAN SCIENCES	77.8%	81.0%	79.3%
MANAGEMENT SCIENCES	76.9%	79.9%	58.6%
<b>Grand Total</b>	<b>72.7%</b>	<b>73.0%</b>	<b>72.8%</b>

1. **Success rate:** Number of students that passed expressed as a percentage of the total number of students enrolled minus total number of students that cancelled for the module.

Success rate per faculty per SA Students vs International Students (2007 – 2009)

Table 8:

Faculty	2007			2008			2009		
	SA	INT	Total	SA	INT	Total	SA	INT	Total
APPLIED & COMPUTER SCIENCES	71.5%	71.3%	71.5%	70.8%	72.6%	71.0%	72.3%	75.3%	72.6%
ENGINEERING	63.2%	65.7%	63.4%	63.4%	64.7%	63.6%	65.6%	70.0%	66.0%
HUMAN SCIENCES	76.3%	81.2%	76.7%	77.8%	83.1%	78.3%	78.6%	85.0%	79.0%
MANAGEMENT SCIENCES	76.7%	81.3%	77.1%	76.8%	82.2%	77.2%	72.5%	79.5%	72.9%
<b>Grand Total</b>	<b>72.5%</b>	<b>74.9%</b>	<b>72.7%</b>	<b>72.7%</b>	<b>75.5%</b>	<b>73.0%</b>	<b>72.4%</b>	<b>77.0%</b>	<b>72.8%</b>

Success rate per SA Students vs International Students (2007 – 2009)



Figure 6

1. **Success rate:** Number of students that passed expressed as a percentage of the total number of students enrolled minus total number of students that cancelled for the module.
2. SA – South Africa students
3. INT – International Students

## Success rate per department (2007-2009)

Table 9:

Department	Year		
	2007	2008	2009
<b>APPLIED &amp; COMPUTER SCIENCES</b>	<b>71.5%</b>	<b>71.0%</b>	<b>72.6%</b>
BIOSCIENCES	78.5%	81.3%	80.2%
CHEMISTRY	71.6%	72.4%	77.2%
HEALTH SCIENCES	70.2%	75.9%	81.1%
INF & COMM TECH, OFF MAN TECH	77.6%	80.8%	79.2%
MATHEMATICS	60.7%	51.4%	48.9%
PHYSICS & NON-DESTRUCT TESTING	64.3%	56.1%	61.7%
SOFTWARE STUDIES	70.7%	73.4%	79.9%
<b>ENGINEERING</b>	<b>63.4%</b>	<b>63.5%</b>	<b>66.0%</b>
CHEMICAL ENGINEERING	50.6%	54.3%	58.6%
CIVIL ENGINEERING	70.3%	66.9%	78.0%
ELECTRONIC ENGINEERING	70.3%	77.1%	78.8%
INDUSTRIAL ENG. & OPS. MANAG.	76.1%	77.3%	81.2%
MECHANICAL ENGINEERING	58.5%	57.7%	54.7%
METALLURGICAL ENGINEERING	60.6%	68.5%	66.2%
POWER ENGINEERING	53.0%	46.4%	54.7%
PROCESS CONTROL & COMP SYSTEMS	67.0%	67.7%	68.3%
<b>HUMAN SCIENCES</b>	<b>76.7%</b>	<b>78.3%</b>	<b>79.0%</b>
COMMUNICATION AND EDUCATION	75.8%	76.7%	82.6%
HOSPITALITY, TOURISM & PR MAN.	80.3%	83.1%	83.1%
LEGAL SCIENCES			69.7%
VISUAL ARTS & DESIGN	74.9%	77.9%	81.4%
<b>MANAGEMENT SCIENCES</b>	<b>77.0%</b>	<b>77.2%</b>	<b>72.9%</b>
ACCOUNTANCY	72.2%	69.9%	65.7%
HR MANAGEMENT	79.5%	82.5%	73.1%
LOGISTICS	81.3%	82.4%	79.5%
MARKETING & SPORT MANAGEMENT	81.0%	82.5%	82.2%
OFFICE & SPORT MANAGEMENT	91.9%	79.1%	96.3%
<b>Grand Total</b>	<b>72.7%</b>	<b>73.0%</b>	<b>72.8%</b>

1. **Success rate:** Number of students that passed expressed as a percentage of the total number of students enrolled minus total number of students that cancelled for the module.

Distribution of success rate across department per campus (2007 – 2009)

Table 10:

Vanderbijlpark	Year		
	2007	2008	2009
<b>APPLIED &amp; COMPUTER SCIENCES</b>	<b>71.8%</b>	<b>71.0%</b>	<b>72.3%</b>
BIOSCIENCES	79.0%	81.5%	80.3%
CHEMISTRY	71.7%	72.6%	78.4%
HEALTH SCIENCES	70.2%	75.9%	81.1%
INF & COMM TECH, OFF MAN TECH	78.9%	81.6%	80.3%
MATHEMATICS	61.2%	51.5%	50.3%
PHYSICS & NON-DESTRUCT TESTING	66.2%	58.4%	65.2%
SOFTWARE STUDIES	72.1%	77.0%	80.8%
<b>ENGINEERING</b>	<b>64.2%</b>	<b>64.4%</b>	<b>66.9%</b>
CHEMICAL ENGINEERING	54.1%	56.1%	59.6%
CIVIL ENGINEERING	70.3%	66.9%	78.0%
ELECTRONIC ENGINEERING	70.6%	78.0%	79.6%
INDUSTRIAL ENG. & OPS. MANAG.	76.1%	77.3%	81.2%
MECHANICAL ENGINEERING	58.5%	57.7%	54.7%
METALLURGICAL ENGINEERING	60.6%	68.5%	66.2%
POWER ENGINEERING	53.3%	46.9%	56.1%
PROCESS CONTROL & COMP SYSTEMS	68.7%	69.6%	70.5%
<b>HUMAN SCIENCES</b>	<b>79.9%</b>	<b>83.0%</b>	<b>85.2%</b>
COMMUNICATION AND EDUCATION	79.7%	82.9%	87.8%
HOSPITALITY, TOURISM & PR MAN.	81.6%	84.2%	84.8%
LEGAL SCIENCES			81.4%
VISUAL ARTS & DESIGN	74.9%	77.9%	81.4%
<b>MANAGEMENT SCIENCES</b>	<b>78.7%</b>	<b>79.6%</b>	<b>74.8%</b>
ACCOUNTANCY	78.7%	79.1%	74.2%
HR MANAGEMENT	74.8%	77.2%	69.9%
LOGISTICS	83.0%	82.7%	80.9%
MARKETING & SPORT MANAGEMENT	74.8%	82.3%	71.2%
OFFICE & SPORT MANAGEMENT	90.6%	78.5%	96.3%
<b>Grand Total</b>	<b>72.7%</b>	<b>73.1%</b>	<b>73.8%</b>

1. **Success rate:** Number of students that passed expressed as a percentage of the total number of students enrolled minus total number of students that cancelled for the module.

Distribution of success rate across department per campus (2007 – 2009)

Table 11:

Educity	Year		
	2007	2008	2009
<b>APPLIED &amp; COMPUTER SCIENCES</b>	<b>68.5%</b>	<b>70.0%</b>	<b>82.1%</b>
INF & COMM TECH, OFF MAN TECH	75.4%	79.0%	78.3%
SOFTWARE STUDIES	63.4%	65.9%	83.7%
<b>HUMAN SCIENCES</b>	<b>69.2%</b>	<b>71.4%</b>	<b>75.1%</b>
COMMUNICATION AND EDUCATION	69.2%	71.4%	81.4%
HOSPITALITY, TOURISM & PR MAN.		71.3%	59.9%
LEGAL SCIENCES			66.6%
<b>MANAGEMENT SCIENCES</b>	<b>79.8%</b>	<b>79.6%</b>	<b>76.2%</b>
ACCOUNTANCY	60.8%	50.3%	54.0%
HR MANAGEMENT	81.5%	84.4%	74.1%
LOGISTICS	81.6%	83.2%	81.5%
MARKETING & SPORT MANAGEMENT	85.5%	84.9%	85.9%
OFFICE & SPORT MANAGEMENT	100.0%	100.0%	
<b>Grand Total</b>	<b>75.9%</b>	<b>76.5%</b>	<b>76.6%</b>

Table 12:

Ekurhuleni	Year		
	2007	2008	2009
<b>APPLIED &amp; COMPUTER SCIENCES</b>	<b>76.9%</b>	<b>77.4%</b>	<b>74.0%</b>
INF & COMM TECH, OFF MAN TECH	77.6%	80.6%	78.2%
MATHEMATICS	78.9%		
SOFTWARE STUDIES	75.7%	70.7%	65.5%
<b>ENGINEERING</b>	<b>63.3%</b>	<b>60.4%</b>	<b>71.6%</b>
ELECTRONIC ENGINEERING	85.1%		
MECHANICAL ENGINEERING	72.4%		
POWER ENGINEERING	20.0%		
PROCESS CONTROL & COMP SYSTEMS	57.1%	60.4%	71.6%
<b>HUMAN SCIENCES</b>	<b>75.1%</b>	<b>69.0%</b>	<b>59.9%</b>
COMMUNICATION AND EDUCATION	77.0%	66.1%	56.2%
HOSPITALITY, TOURISM & PR MAN.	67.6%	80.8%	77.4%
LEGAL SCIENCES			55.9%
<b>MANAGEMENT SCIENCES</b>	<b>66.9%</b>	<b>64.8%</b>	<b>60.9%</b>
ACCOUNTANCY	61.7%	57.6%	56.8%
HR MANAGEMENT	67.8%	73.8%	67.2%
LOGISTICS	72.5%	78.1%	71.6%
MARKETING & SPORT MANAGEMENT	79.0%	76.9%	66.9%
OFFICE & SPORT MANAGEMENT	100.0%		
<b>Grand Total</b>	<b>71.2%</b>	<b>68.7%</b>	<b>64.9%</b>

Distribution of success rate across department per campus (2007 – 2009)

Table 13:

Secunda	Year		
	2007	2008	2009
<b>APPLIED &amp; COMPUTER SCIENCES</b>	<b>65.3%</b>	<b>59.6%</b>	<b>49.9%</b>
CHEMISTRY	69.2%	70.1%	59.7%
INF & COMM TECH, OFF MAN TECH	60.0%	73.3%	88.9%
MATHEMATICS	55.4%	49.4%	37.4%
PHYSICS & NON-DESTRUCT TESTING	43.9%	33.9%	32.8%
SOFTWARE STUDIES	87.0%	88.2%	81.7%
<b>ENGINEERING</b>	<b>48.7%</b>	<b>50.4%</b>	<b>51.1%</b>
CHEMICAL ENGINEERING	33.5%	45.5%	55.1%
ELECTRONIC ENGINEERING	55.3%	60.5%	64.5%
MECHANICAL ENGINEERING	50.0%		
POWER ENGINEERING	50.1%	42.6%	47.0%
PROCESS CONTROL & COMP SYSTEMS	59.4%	59.3%	43.3%
<b>HUMAN SCIENCES</b>	<b>66.9%</b>	<b>71.7%</b>	<b>61.6%</b>
COMMUNICATION AND EDUCATION	66.9%	71.7%	72.9%
LEGAL SCIENCES			58.0%
<b>MANAGEMENT SCIENCES</b>	<b>65.8%</b>	<b>61.5%</b>	<b>54.4%</b>
ACCOUNTANCY	61.9%	60.9%	51.3%
HR MANAGEMENT	68.2%	60.1%	68.0%
LOGISTICS	81.0%	71.5%	50.1%
MARKETING & SPORT MANAGEMENT	50.8%	36.5%	85.7%
<b>Grand Total</b>	<b>61.9%</b>	<b>60.5%</b>	<b>54.4%</b>

Table 14:

Upington	Year		
	2007	2008	2009
<b>APPLIED &amp; COMPUTER SCIENCES</b>	<b>70.7%</b>	<b>77.0%</b>	<b>77.5%</b>
BIOSCIENCES	70.6%	78.2%	77.0%
INF & COMM TECH, OFF MAN TECH	66.7%	100.0%	60.0%
SOFTWARE STUDIES	71.1%	74.8%	78.6%
<b>HUMAN SCIENCES</b>	<b>75.5%</b>	<b>68.3%</b>	<b>78.0%</b>
COMMUNICATION AND EDUCATION	72.6%	67.1%	76.8%
HOSPITALITY, TOURISM & PR MAN.	79.9%	69.6%	80.2%
LEGAL SCIENCES			76.9%
<b>MANAGEMENT SCIENCES</b>	<b>72.2%</b>	<b>73.6%</b>	<b>66.2%</b>
ACCOUNTANCY	59.1%	60.1%	56.6%
HR MANAGEMENT	82.3%	89.2%	74.3%
LOGISTICS	80.4%	79.5%	79.9%
MARKETING & SPORT MANAGEMENT	86.8%	61.0%	57.4%
<b>Grand Total</b>	<b>73.0%</b>	<b>72.6%</b>	<b>71.0%</b>

Graduates per faculty (2007 – 2009)

Table 15:

Faculty	Year		
	2007	2008	2009
APPLIED & COMPUTER SCIENCES	352	530	580
ENGINEERING	607	755	848
HUMAN SCIENCES	351	326	374
MANAGEMENT SCIENCES	1367	1366	1408
<b>Grand Total</b>	<b>2677</b>	<b>2977</b>	<b>3210</b>

Graduate (2007 – 2009)

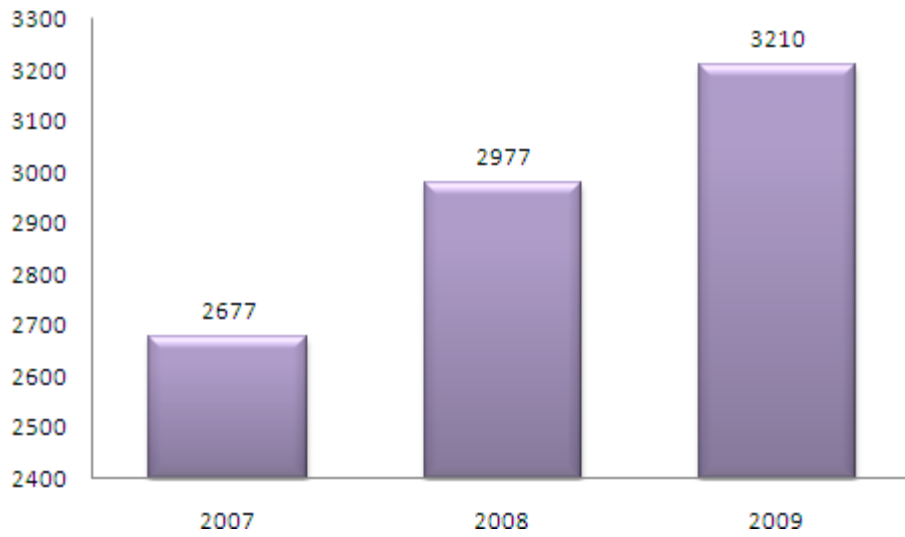


Figure 7



Graduation rate per faculty (2007 – 2009)

Table 16:

Faculty	Year		
	2007	2008	2009
APPLIED & COMPUTER SCIENCES	11.2%	15.9%	15.7%
ENGINEERING	11.1%	12.9%	12.5%
HUMAN SCIENCES	21.4%	17.9%	17.3%
MANAGEMENT SCIENCES	23.4%	23.1%	20.9%
<b>VUT</b>	<b>16.6%</b>	<b>17.6%</b>	<b>16.6%</b>

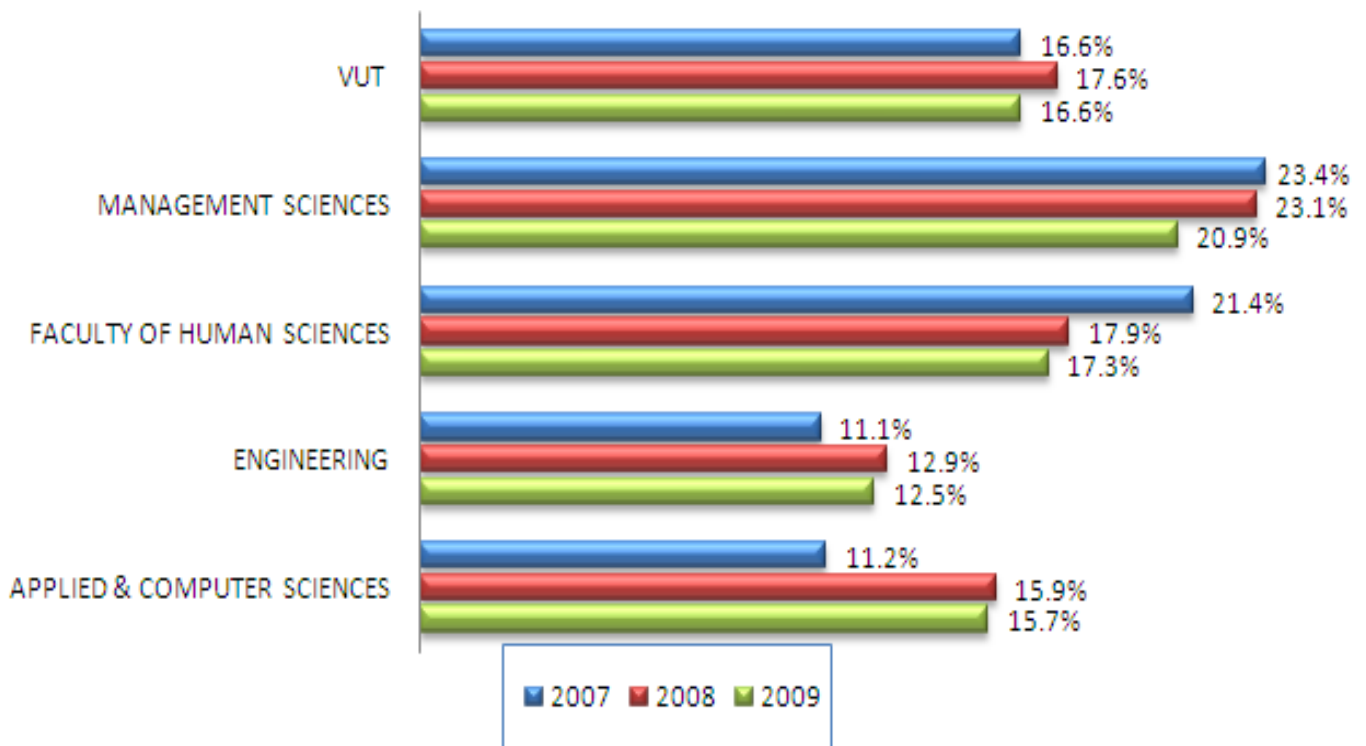


Figure 8

1. **Graduation rate** - Number of students graduated in Year N / number of students registered in Year N.

## Headcount across faculties (2007 – 2009)

Table 17:

Faculty	Year		
	2007	2008	2009
APPLIED & COMPUTER SCIENCES	3136	3331	3695
ENGINEERING	5489	5853	6762
HUMAN SCIENCES	1644	1818	2156
MANAGEMENT SCIENCES	5852	5912	6725
<b>Grand Total</b>	<b>16121</b>	<b>16914</b>	<b>19338</b>

## Headcount percentage increase/decrease per campus (2007 – 2009)

Table 18:

Campus	Year		
	2007	2008	2009
Educity	4.3%	10.4%	21.1%
Ekurhuleni	-12.0%	4.2%	19.5%
Secunda	-5.6%	3.1%	22.1%
Upington	-18.8%	-1.4%	25.0%
Vanderbijlpark	-10.6%	3.3%	7.4%
<b>Grand Total</b>	<b>-7.8%</b>	<b>4.7%</b>	<b>12.5%</b>

1. **Headcount** is calculated based on the following criteria: The primary qualification of the student; the qualification has not been cancelled; the student is registered for a subject.

Headcount percentage increase/decrease per campus (2007 – 2009)

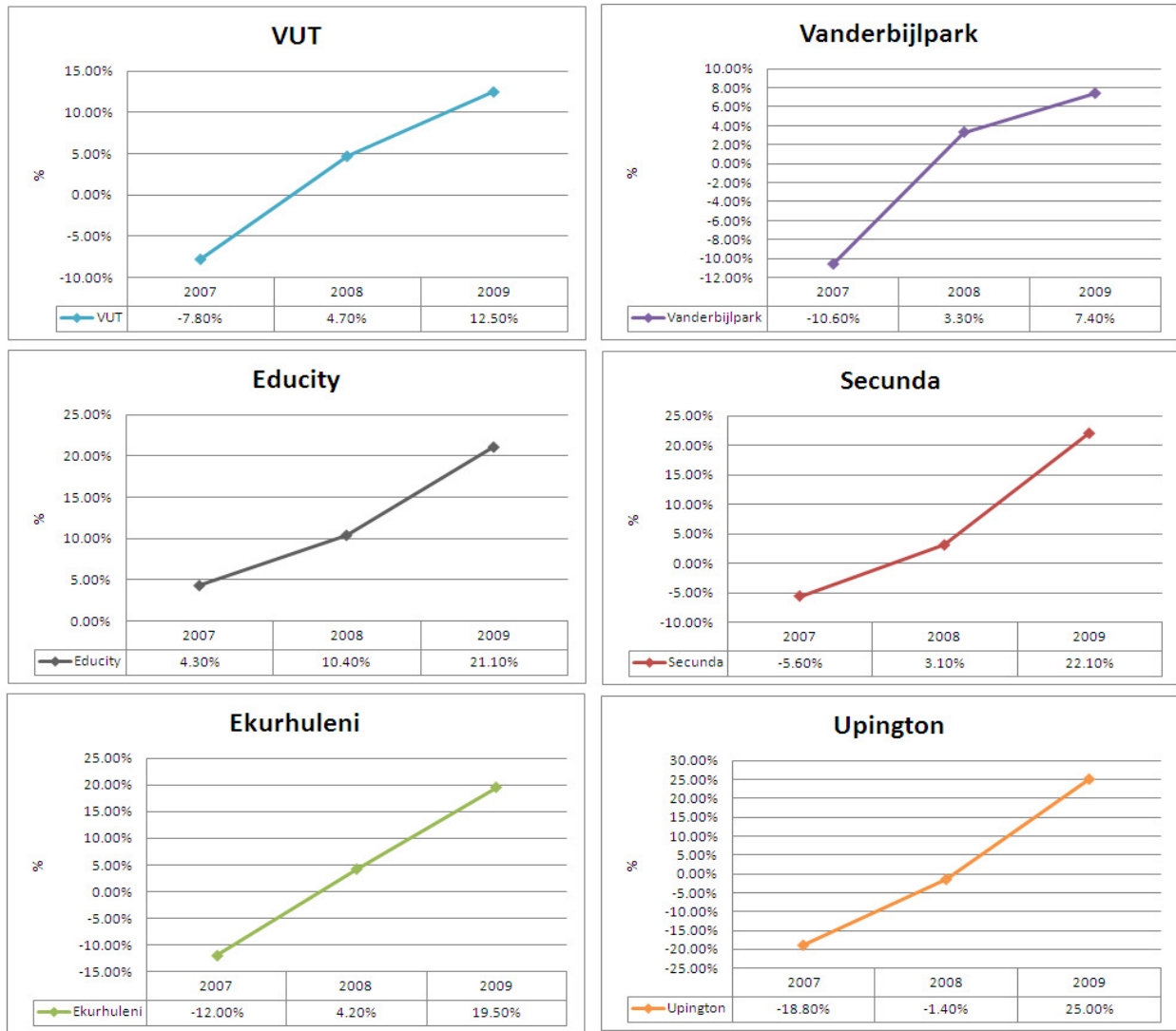


Figure 10

1. **Headcount** is calculated based on the following criteria: The primary qualification of the student; the qualification has not been cancelled; the student is registered for a subject.

Graduate increase/decrease per faculty (2007 – 2009)

Table 19:

Faculty	Year		
	2007	2008	2009
APPLIED & COMPUTER SCIENCES	36.1%	33.6%	8.6%
ENGINEERING	9.9%	19.6%	11.0%
HUMAN SCIENCES	9.4%	-7.7%	12.8%
MANAGEMENT SCIENCES	2.6%	-0.1%	3.0%
<b>Grand Total</b>	<b>9.6%</b>	<b>10.1%</b>	<b>7.3%</b>

Headcount percentage increase/decrease per faculty (2007 – 2009)

Table 20:

Faculty	Year		
	2007	2008	2009
APPLIED & COMPUTER SCIENCES	25.8%	5.9%	9.9%
ENGINEERING	-6.7%	6.2%	13.4%
HUMAN SCIENCES	-8.6%	9.6%	15.7%
MANAGEMENT SCIENCES	-26.5%	1.0%	12.1%
<b>Grand Total</b>	<b>-7.8%</b>	<b>4.7%</b>	<b>12.5%</b>

1. **Headcount** is calculated based on the following criteria: The primary qualification of the student; the qualification has not been cancelled; the student is registered for a subject.

Headcount vs graduation percentage increase/decrease per faculty (2008- 2009)

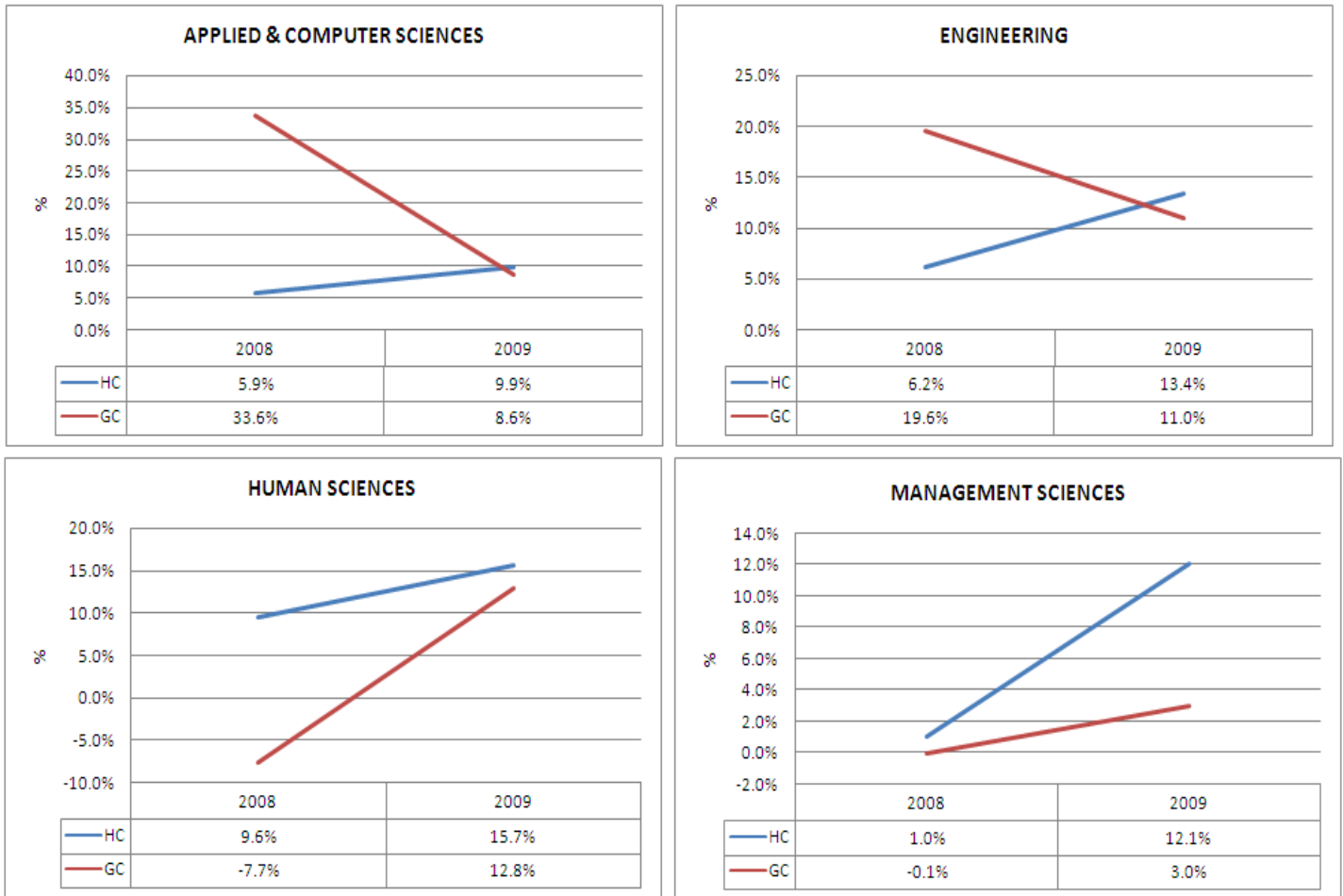


Figure 11

*HC – Headcount*

*GC – Graduation*



For any enquiries, contact:

Prof P Naidoo, Deputy Vice-Chancellor : Resources and Planning, Tel: 016 950 9216  
Mr Y Naidu, Information Analyst : Institutional Planning, Tel: 016 950 9219  
Mr P Maleke, Jnr Information Analyst : Institutional Planning Unit, Tel: 016 950 9229